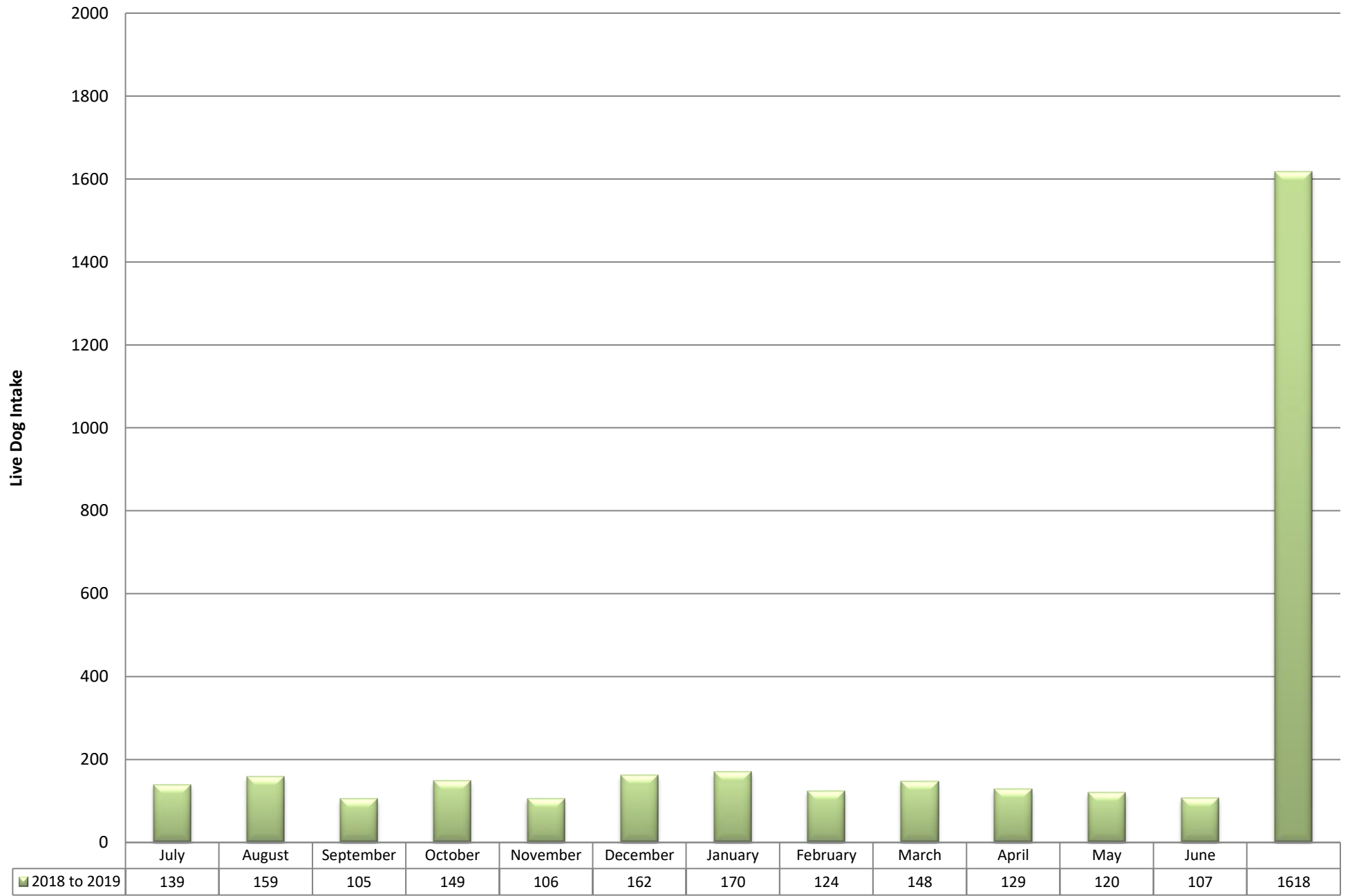


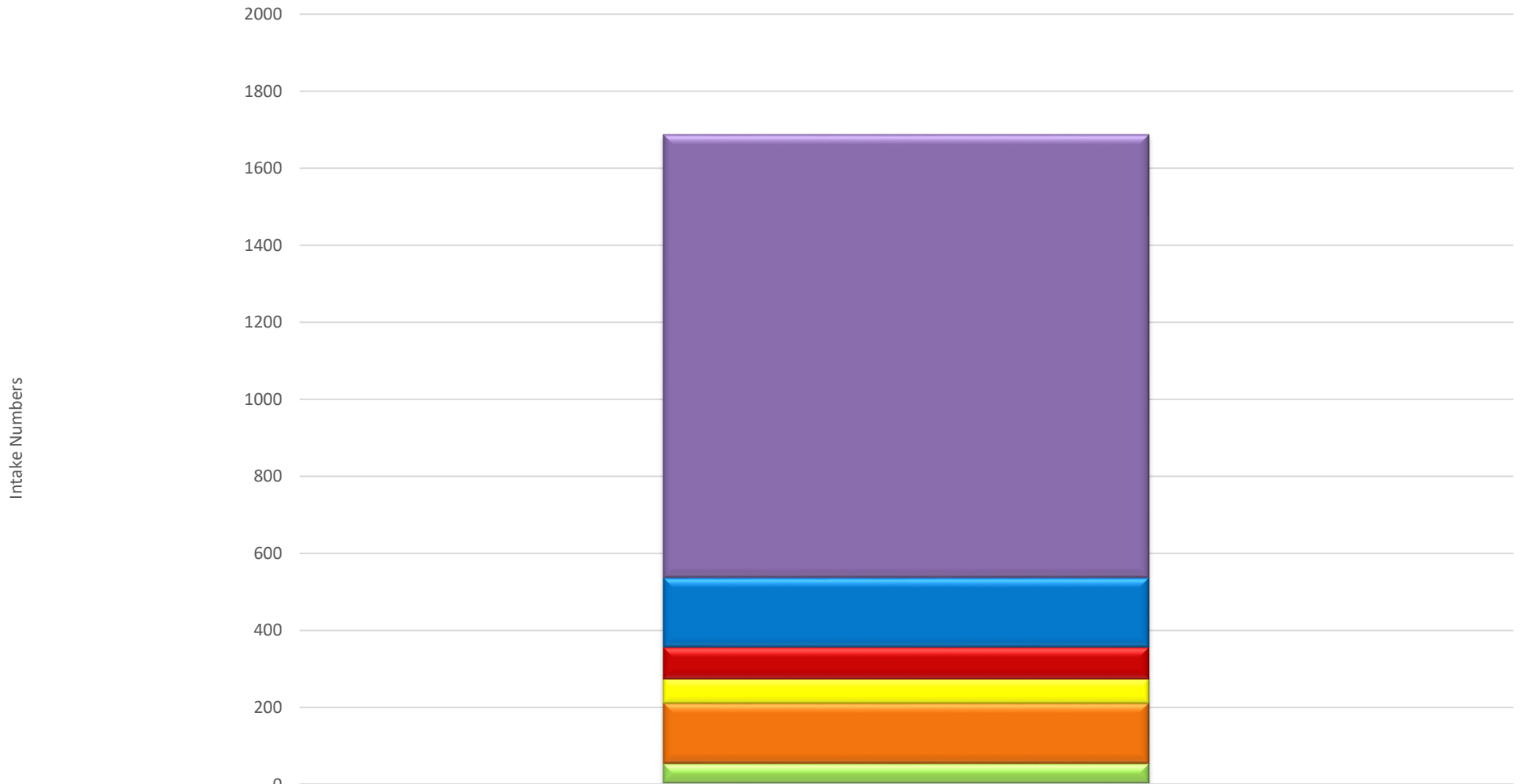
# YCAS Live Dog Intake

## Fiscal Years 2018-2019

**(Non-Spay/Neuter, Excluding Foster Return)**

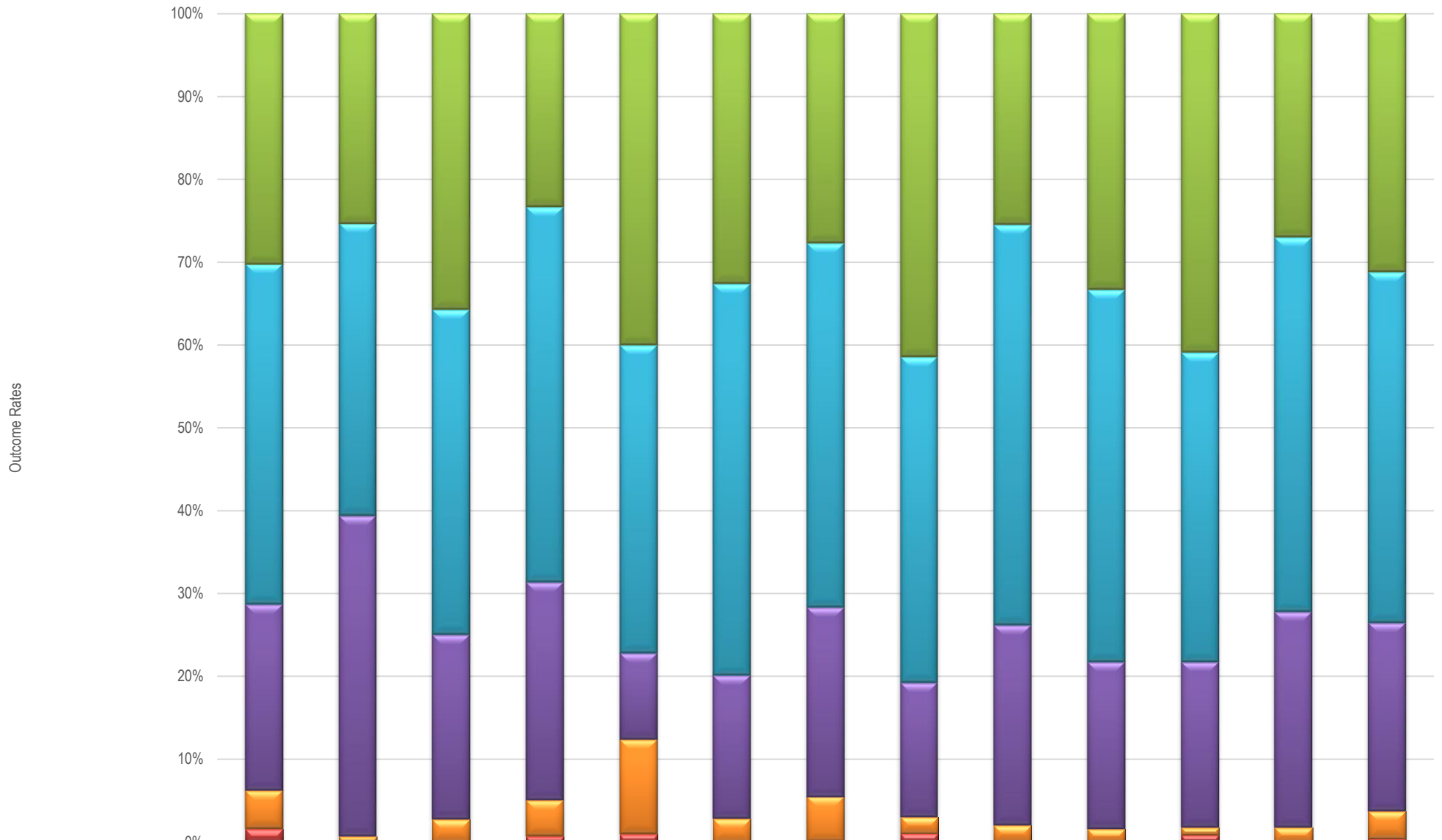


# YCAS Dog Intakes Fiscal Year 2018-2019



	2018 to 2019
Stray	1152
Owner Surrender	180
Owner Surrender - Euthanasia Request	82
Rabies Confiscate - All	63
Confiscate	157
Return	50
Medical	0
Transfer	3
Born in Shelter/Born in Shelter's Care	1

## YCAS Dog Outcome Rates Fiscal Year 2018 to 2019

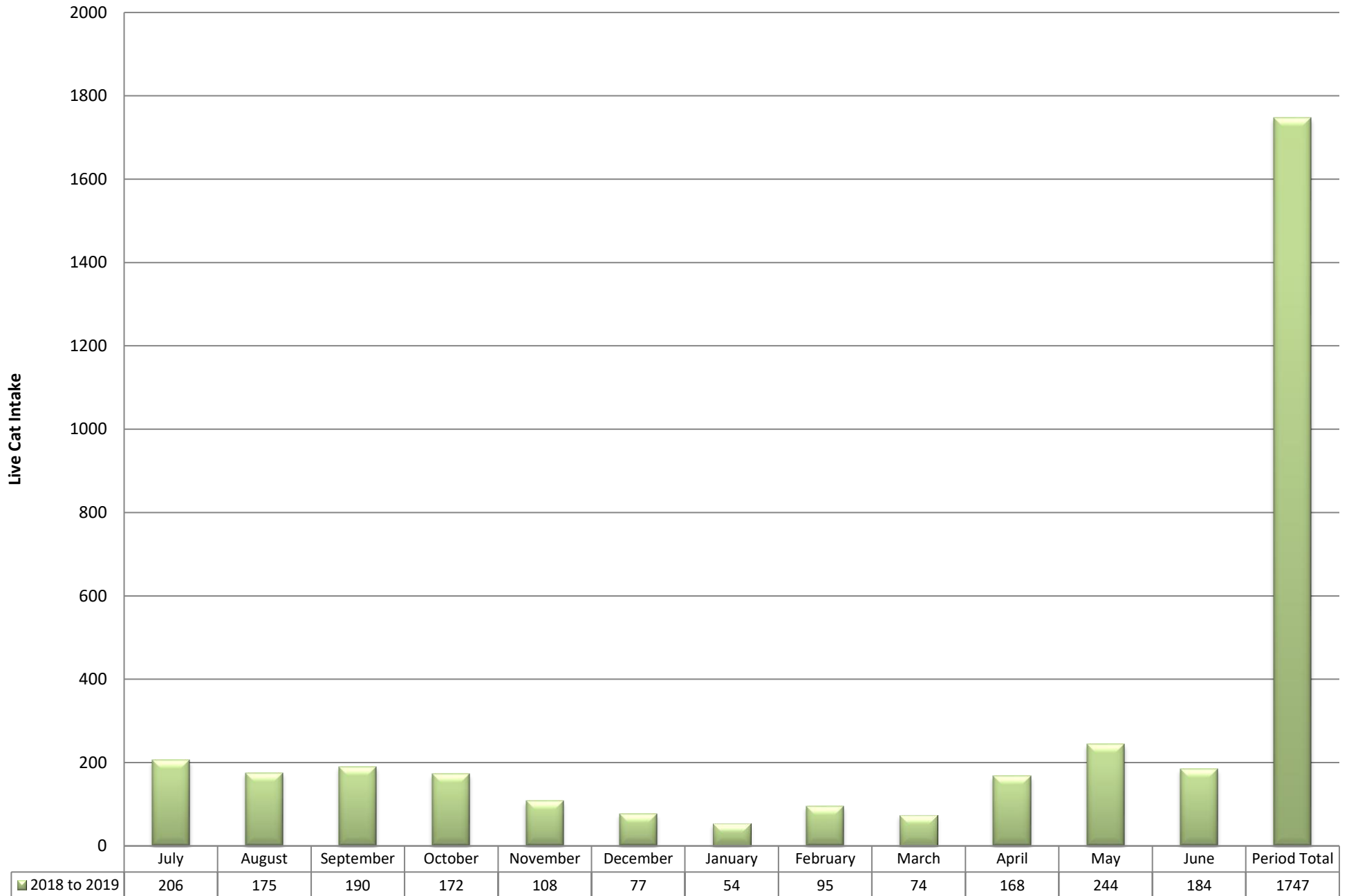


	July	August	September	October	November	December	January	February	March	April	May	June	Year's Average
Adoption Rate	30%	25%	36%	23%	40%	33%	28%	41%	26%	33%	41%	27%	31%
RTO Rate	41%	35%	39%	45%	37%	47%	44%	39%	48%	45%	37%	45%	42%
Rescue/Transfer Rate	22%	39%	22%	26%	10%	17%	23%	16%	24%	20%	20%	26%	23%
Euthanasia Rate	5%	1%	3%	4%	11%	3%	5%	2%	2%	2%	1%	2%	3%
Other Outcomes - Died/Missing	1.5%	0.0%	0.0%	0.7%	0.9%	0.0%	0.0%	1.0%	0%	0%	1%	0%	0%

# YCAS Live Cat Intake

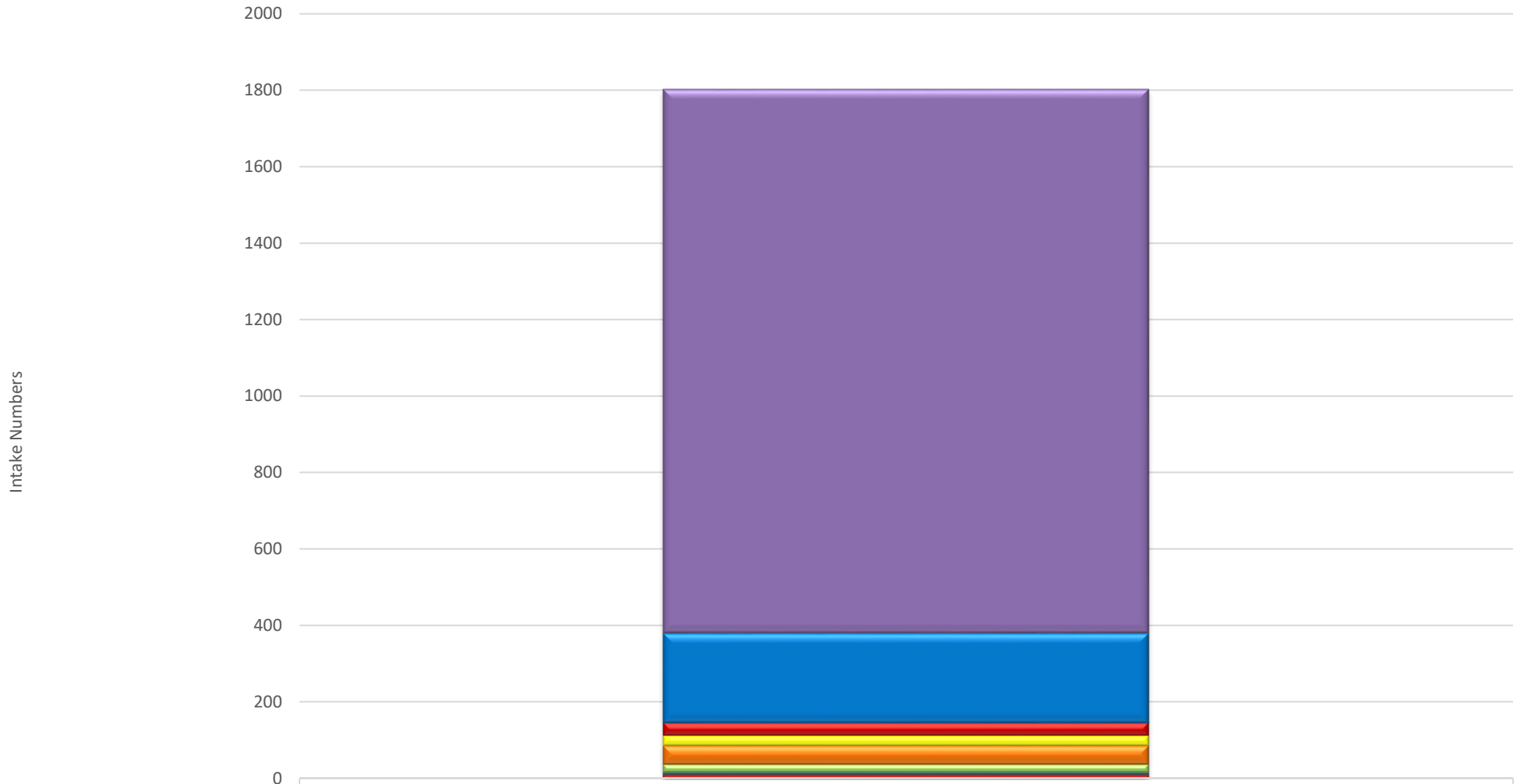
## Fiscal Years 2018-2019

**(Non-Spay/Neuter, Excluding Foster Return)**



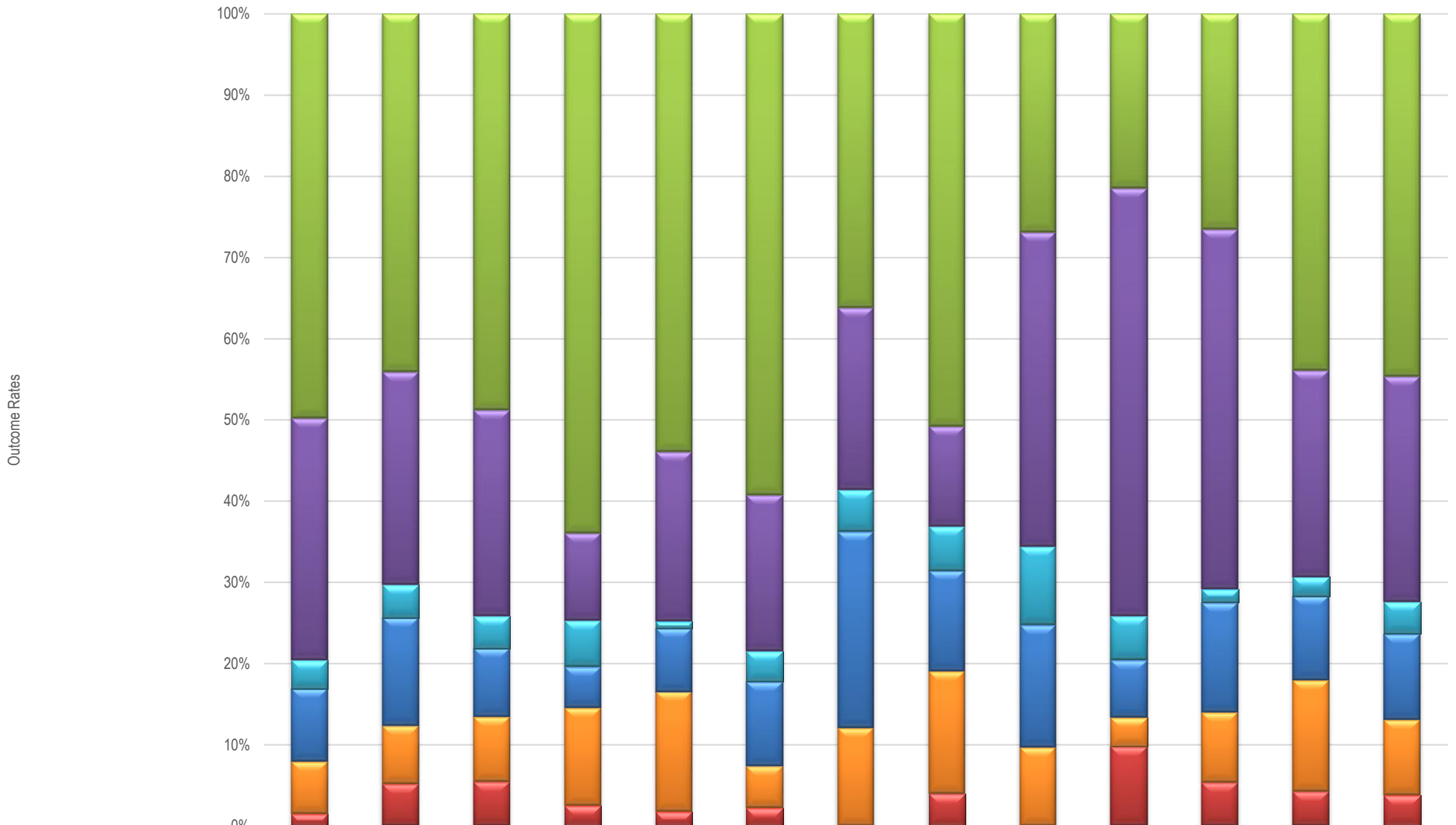
# YCAS Cat Intakes

## Fiscal Years 2018-2019



	2018 to 2019
Stray	1423
Owner Surrender	235
Owner Surrender - Euthanasia Request	33
Rabies Confiscate - All	27
Confiscate	49
Return	21
Medical	0
Transfer	6
Born in Shelter/Born in Shelter's Care	9

## YCAS Cat Outcome Rates Fiscal Year 2018 to 2019



	July	August	September	October	November	December	January	February	March	April	May	June	Year's Average
Adoption Rate	50%	44%	49%	64%	54%	59%	36%	51%	27%	21%	26%	44%	45%
Rescue/Transfer Rate	30%	26%	25%	11%	21%	19%	22%	12%	39%	53%	44%	25%	28%
RTO Rate	3%	4%	4%	6%	1%	4%	5%	5%	10%	5%	2%	2%	4%
Release to Origin Rate	9%	13%	8%	5%	8%	10%	24%	12%	15%	7%	14%	10%	11%
Euthanasia Rate	6%	7%	8%	12%	15%	5%	12%	15%	10%	4%	9%	14%	9%
Rate of Other Outcomes - Died/Missing	1.5%	5.1%	5.5%	2.5%	1.7%	2.2%	0.0%	3.9%	0%	10%	5%	4%	4%