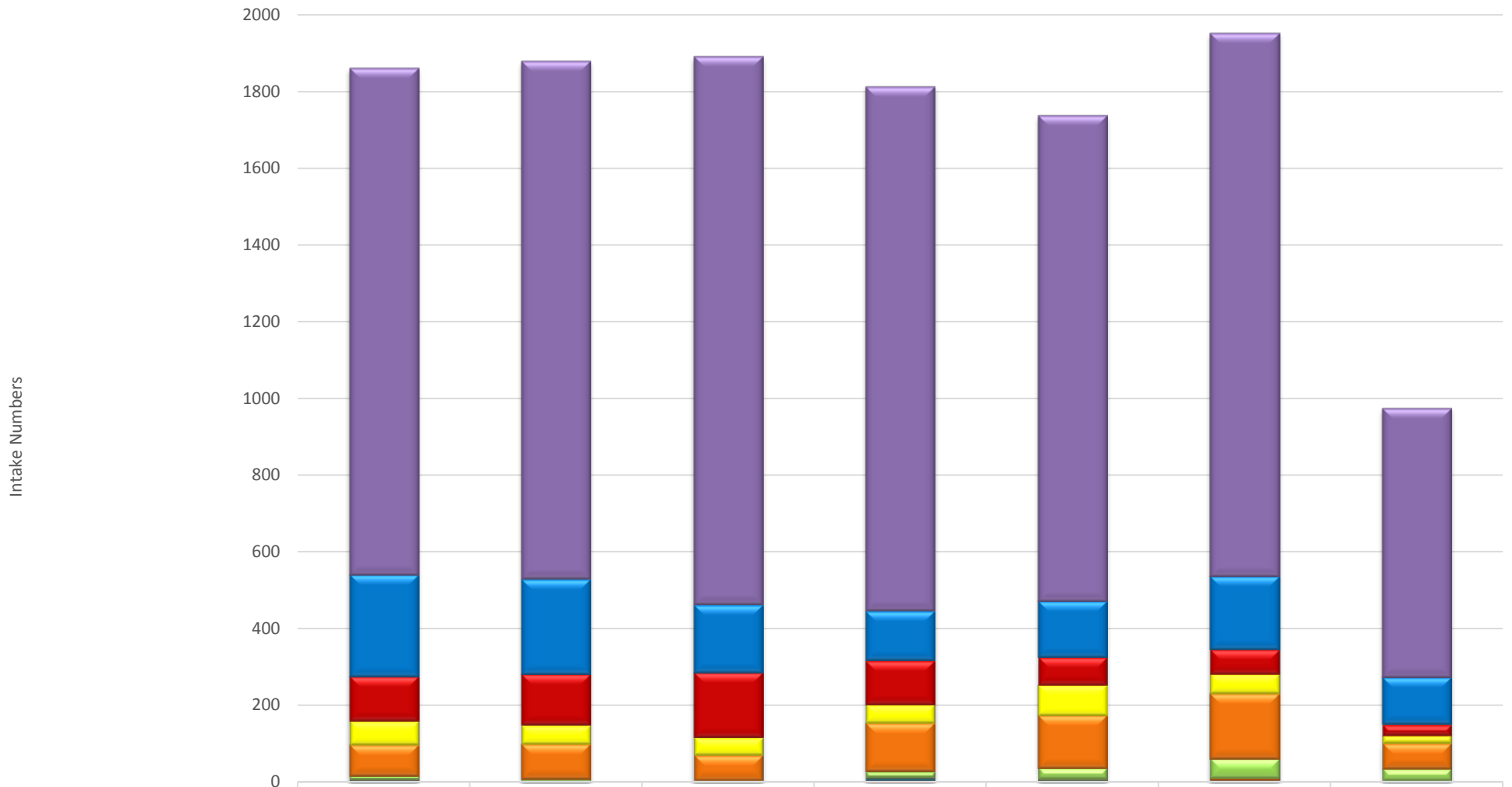


# YCAS Dog Intakes Yearly Comparison

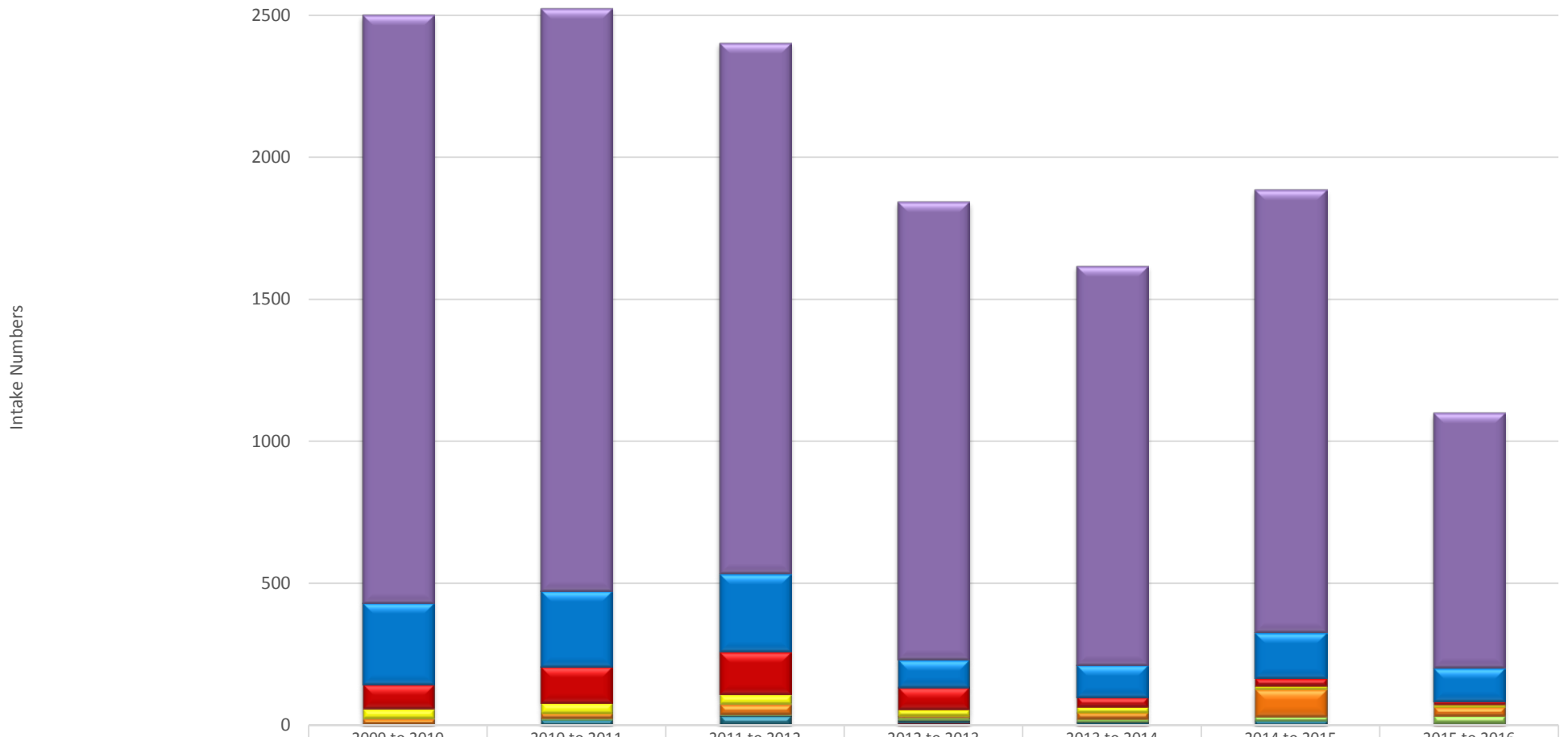
Fiscal Years 2009-2010 through Fiscal YTD as of 1/31/2016 (7 months)



	2009 to 2010	2010 to 2011	2011 to 2012	2012 to 2013	2013 to 2014	2014 to 2015	2015 to 2016
Stray	1322	1351	1430	1368	1266	1416	702
Owner Surrender	265	248	177	130	146	190	123
Owner Surrender - Euthanasia Request	116	132	169	115	73	65	29
Rabies Confiscate - All	62	50	47	48	79	51	20
Confiscate	81	91	67	126	138	170	68
Return	8	7	3	16	28	51	30
Medical	2	0	0	1	2	7	0
Transfer	7	2	0	6	7	3	4
Born in Shelter/Born in Shelter's Care	0	0	0	5	0	0	0

# YCAS Cat Intakes Yearly Comparison

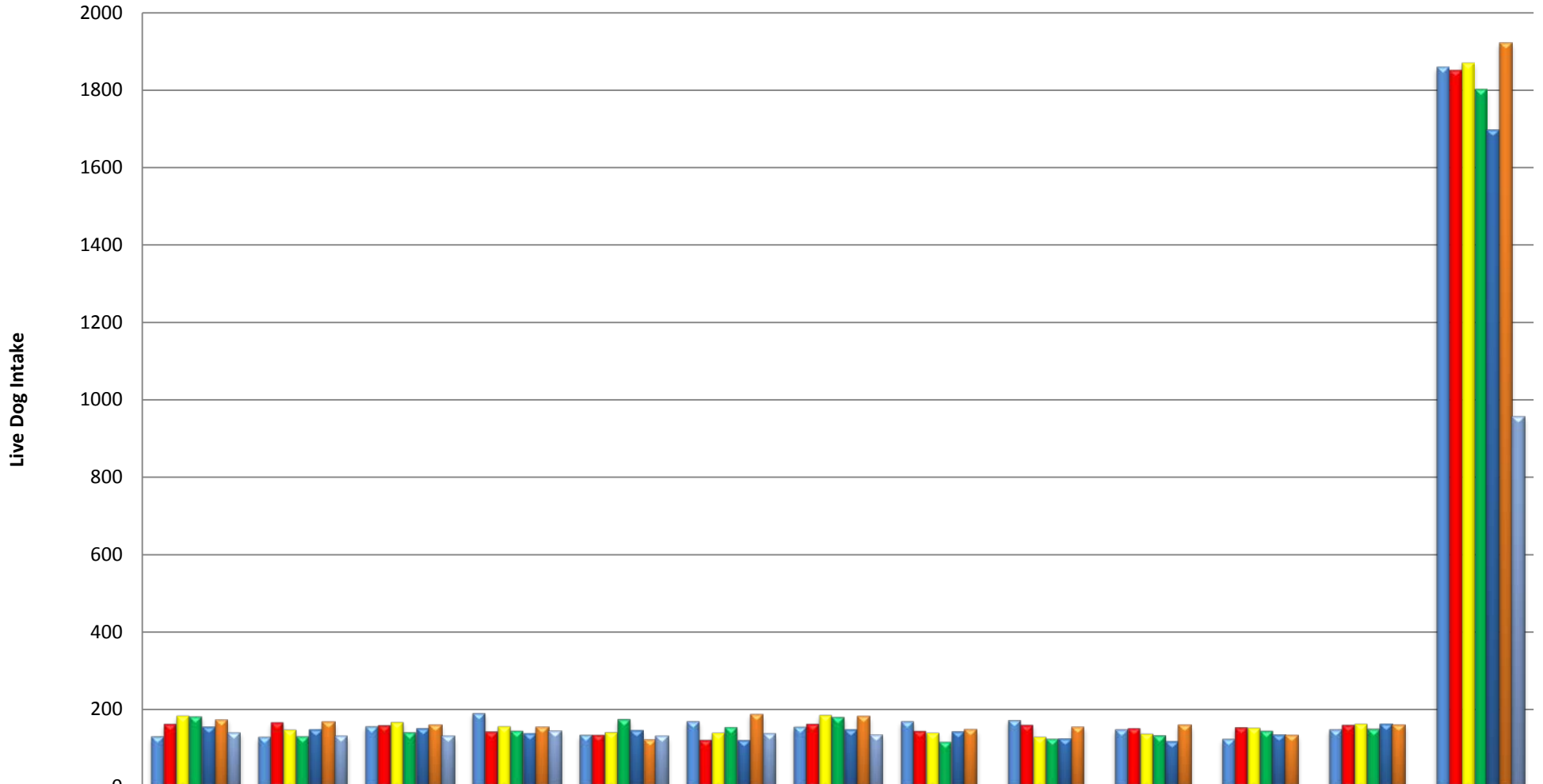
Fiscal Years 2009-2010 through Fiscal YTD as of 1/31/2016 (7 months)



	2009 to 2010	2010 to 2011	2011 to 2012	2012 to 2013	2013 to 2014	2014 to 2015	2015 to 2016
Stray	2070	2052	1870	1613	1405	1558	899
Owner Surrender	286	267	275	97	114	162	118
Owner Surrender - Euthanasia Request	87	127	150	78	35	27	11
Rabies Confiscate - All	34	37	34	21	19	10	8
Confiscate	19	17	37	6	23	98	33
Return	3	6	3	9	9	14	24
Medical	3	0	2	2	2	0	0
Transfer	0	20	34	9	9	16	3
Born in Shelter/Born in Shelter's Care	0	0	0	9	3	1	6

# YCAS Live Dog Intake

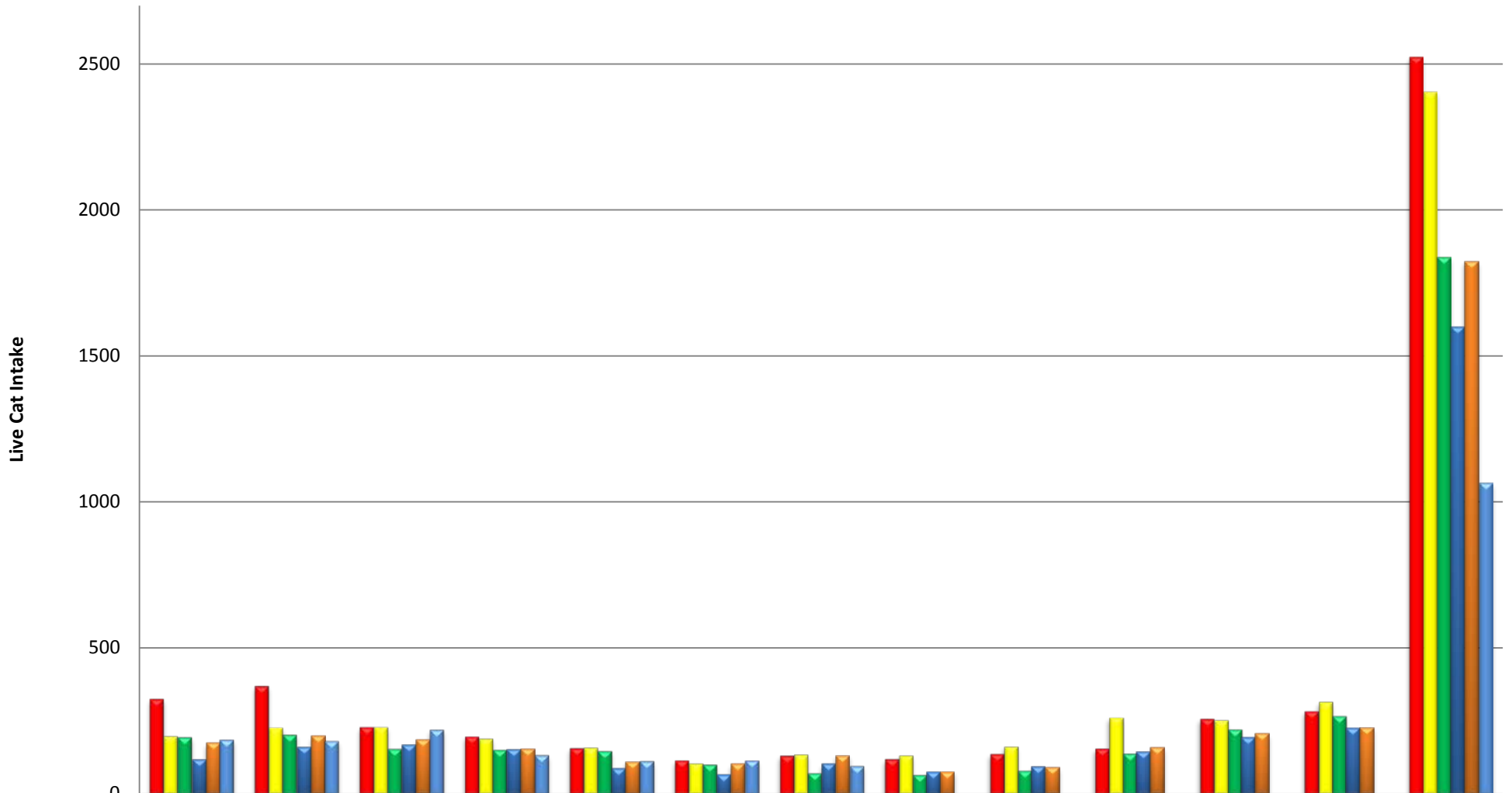
Fiscal Years 2009-2010 through Fiscal YTD as of 1/31/2016 (7 months)  
 (Non-Spay/Neuter, Excluding Foster Return)



	July	August	September	October	November	December	January	February	March	April	May	June	Period Total
2009 to 2010	133	132	159	193	137	172	158	172	175	151	127	151	1860
2010 to 2011	165	169	162	146	137	124	165	147	163	154	157	163	1852
2011 to 2012	186	150	170	159	144	142	188	142	131	140	155	165	1872
2012 to 2013	184	133	143	147	177	157	183	119	127	135	147	152	1804
2013 to 2014	158	148	152	138	146	121	148	145	126	117	136	164	1699
2014 to 2015	176	169	162	157	123	189	183	150	157	161	135	162	1924
2015 to 2016	141	133	132	147	132	138	137	0	0	0	0	0	960

# YCAS Live Cat Intake

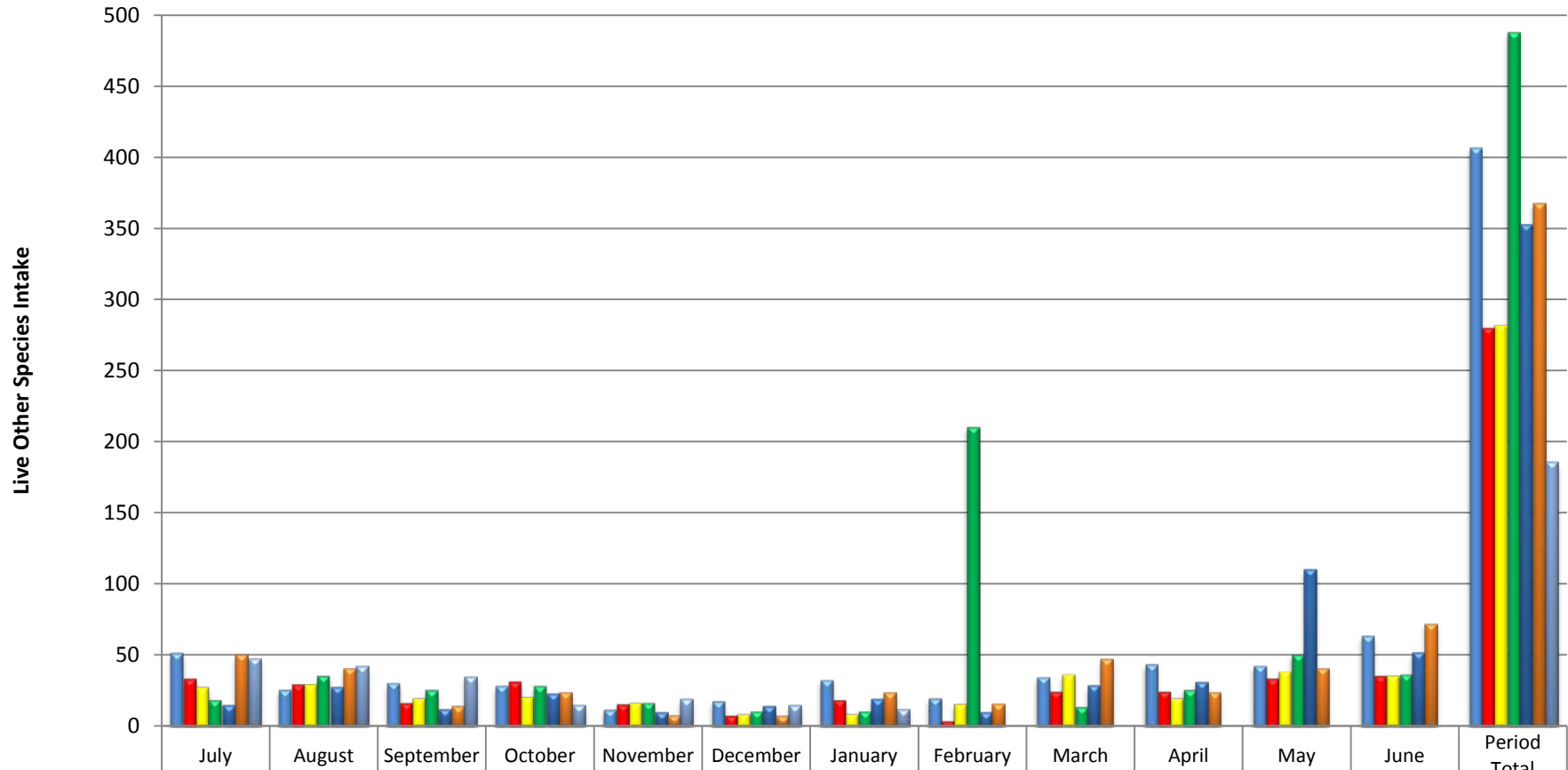
Fiscal Years 2009-2010 through Fiscal YTD as of 1/31/2016 (7 months)  
 (Non-Spay/Neuter, Excluding Foster Return)



	July	August	September	October	November	December	January	February	March	April	May	June	Period Total
■ 2010 to 2011	329	374	233	201	161	119	135	123	141	159	261	288	2524
■ 2011 to 2012	201	231	232	192	162	108	139	135	166	265	255	318	2404
■ 2012 to 2013	198	207	158	155	151	105	75	69	83	142	225	271	1839
■ 2013 to 2014	120	163	170	153	87	66	104	78	95	146	193	226	1601
■ 2014 to 2015	175	199	185	155	112	103	133	78	92	159	206	228	1825
■ 2015 to 2016	189	185	223	136	116	118	99	0	0	0	0	0	1066

## YCAS Live Other Species (Non Dog/Cat) Intake

Fiscal Years 2009-2010 through Fiscal YTD as of 1/31/2016 (7 months)

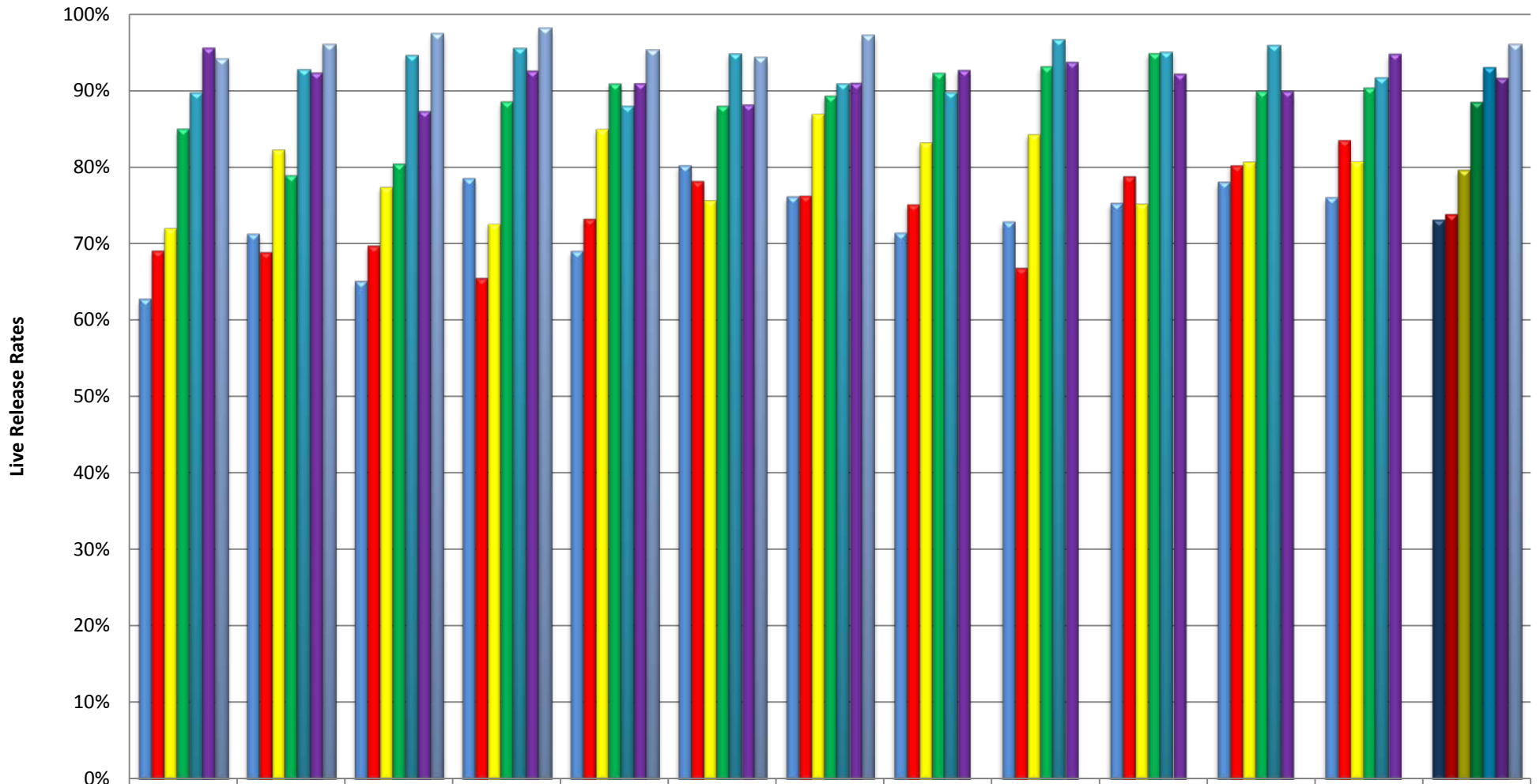


	July	August	September	October	November	December	January	February	March	April	May	June	Period Total
2009 to 2010	52	26	31	29	12	18	33	20	35	44	43	64	407
2010 to 2011	34	30	17	32	16	8	19	4	25	25	34	36	280
2011 to 2012	28	30	20	21	17	9	9	16	37	20	39	36	282
2012 to 2013	19	36	26	29	17	11	11	211	14	26	51	37	488
2013 to 2014	15	28	12	23	10	14	19	10	29	31	110	52	353
2014 to 2015	50	41	14	24	8	7	24	16	47	24	41	72	368
2015 to 2016	48	42	35	15	19	15	12	0	0	0	0	0	186

# YCAS Dog Live Release Rates - as % of Outcomes

Fiscal Years 2009-2010 through January 31, 2016

(Not including Owner Euthanasia Request Dogs)

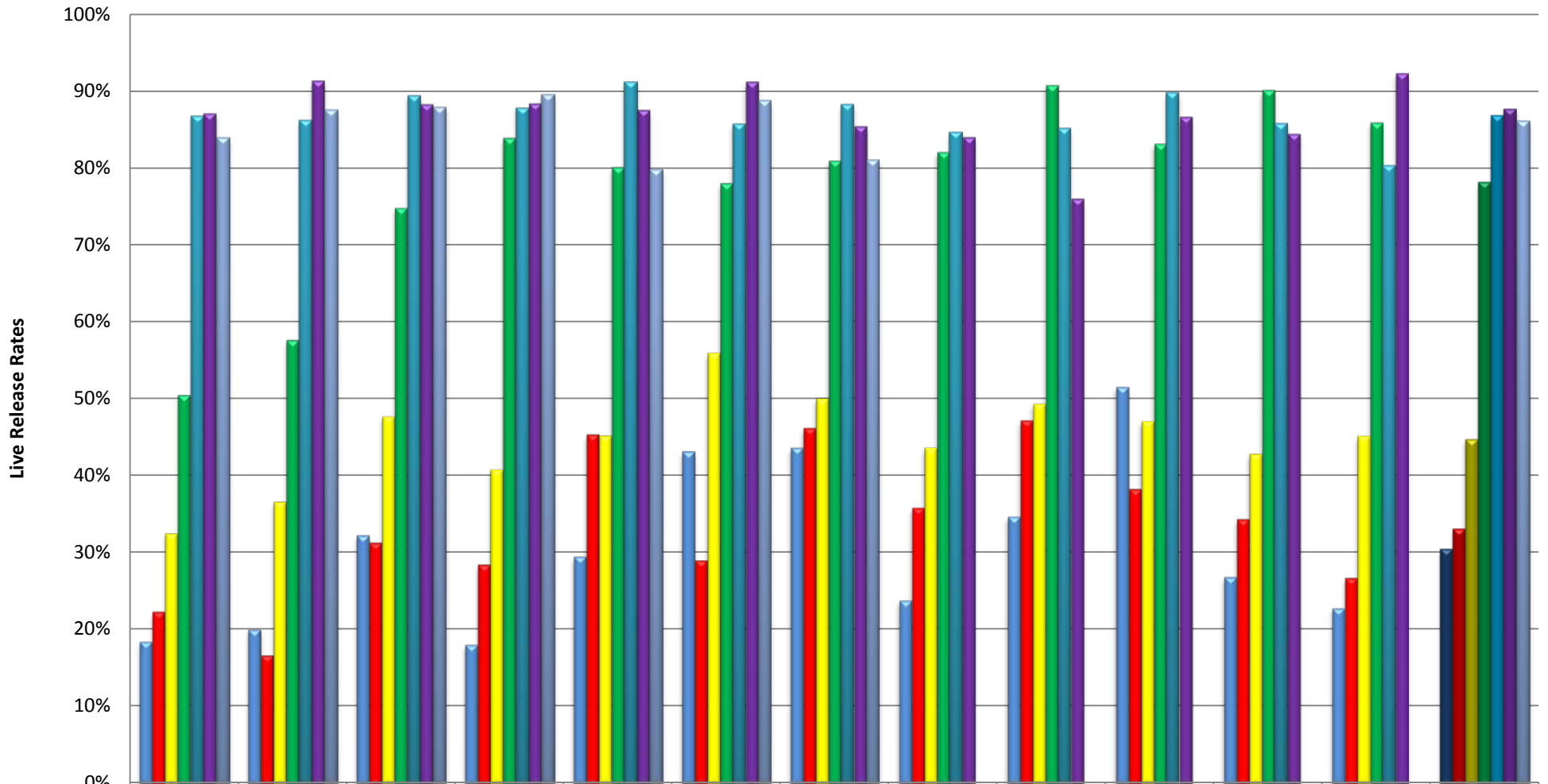


	July	August	September	October	November	December	January	February	March	April	May	June	Year's Average
2009 to 2010	63%	71%	65%	79%	69%	80%	76%	71%	73%	75%	78%	76%	73%
2010 to 2011	69%	69%	70%	66%	73%	78%	76%	75%	67%	79%	80%	84%	74%
2011 to 2012	72%	82%	77%	73%	85%	76%	87%	83%	84%	75%	81%	81%	80%
2012 to 2013	85%	79%	80%	89%	91%	88%	89%	92%	93%	95%	90%	90%	89%
2013 to 2014	90%	93%	95%	96%	88%	95%	91%	90%	97%	95%	96%	92%	93%
2014 to 2015	96%	92%	87%	93%	91%	88%	91%	93%	94%	92%	90%	95%	92%
2015 to 2016	94%	96%	98%	98%	95%	94%	97%	0%	0%	0%	0%	0%	96%

# YCAS Cat Live Release Rates - as % of Outcomes

Fiscal Years 2009-2010 through January 31, 2016

(Not including Owner Euthanasia Request Cats or TNR Euthanized for Medical)

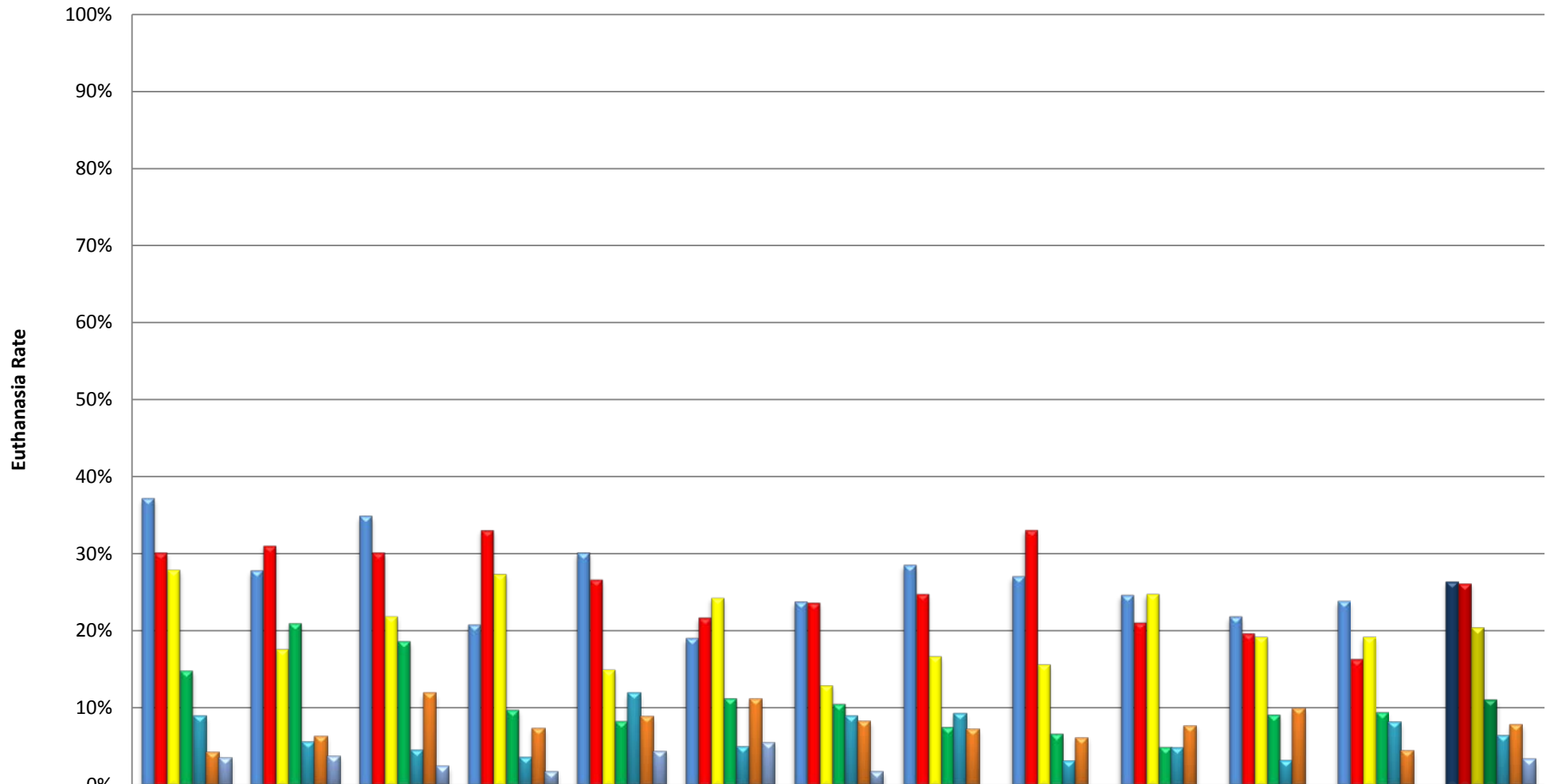


	July	August	September	October	November	December	January	February	March	April	May	June	Year's Average
2009 to 2010	18%	20%	32%	18%	29%	43%	44%	24%	35%	52%	27%	23%	30%
2010 to 2011	22%	17%	31%	28%	45%	29%	46%	36%	47%	38%	34%	27%	33%
2011 to 2012	32%	37%	48%	41%	45%	56%	50%	44%	49%	47%	43%	45%	45%
2012 to 2013	51%	58%	75%	84%	80%	78%	81%	82%	91%	83%	90%	86%	78%
2013 to 2014	87%	86%	90%	88%	91%	86%	88%	85%	85%	90%	86%	80%	87%
2014 to 2015	87%	91%	88%	88%	88%	91%	85%	84%	76%	87%	84%	92%	88%
2015 to 2016	84%	88%	88%	90%	80%	89%	81%	0%	0%	0%	0%	0%	86%

# YCAS Dog Euthanasia Rates - as % of Outcomes

Fiscal Year 2009-2010 through January 31, 2016

(Not including Owner Euthanasia Request Dogs)

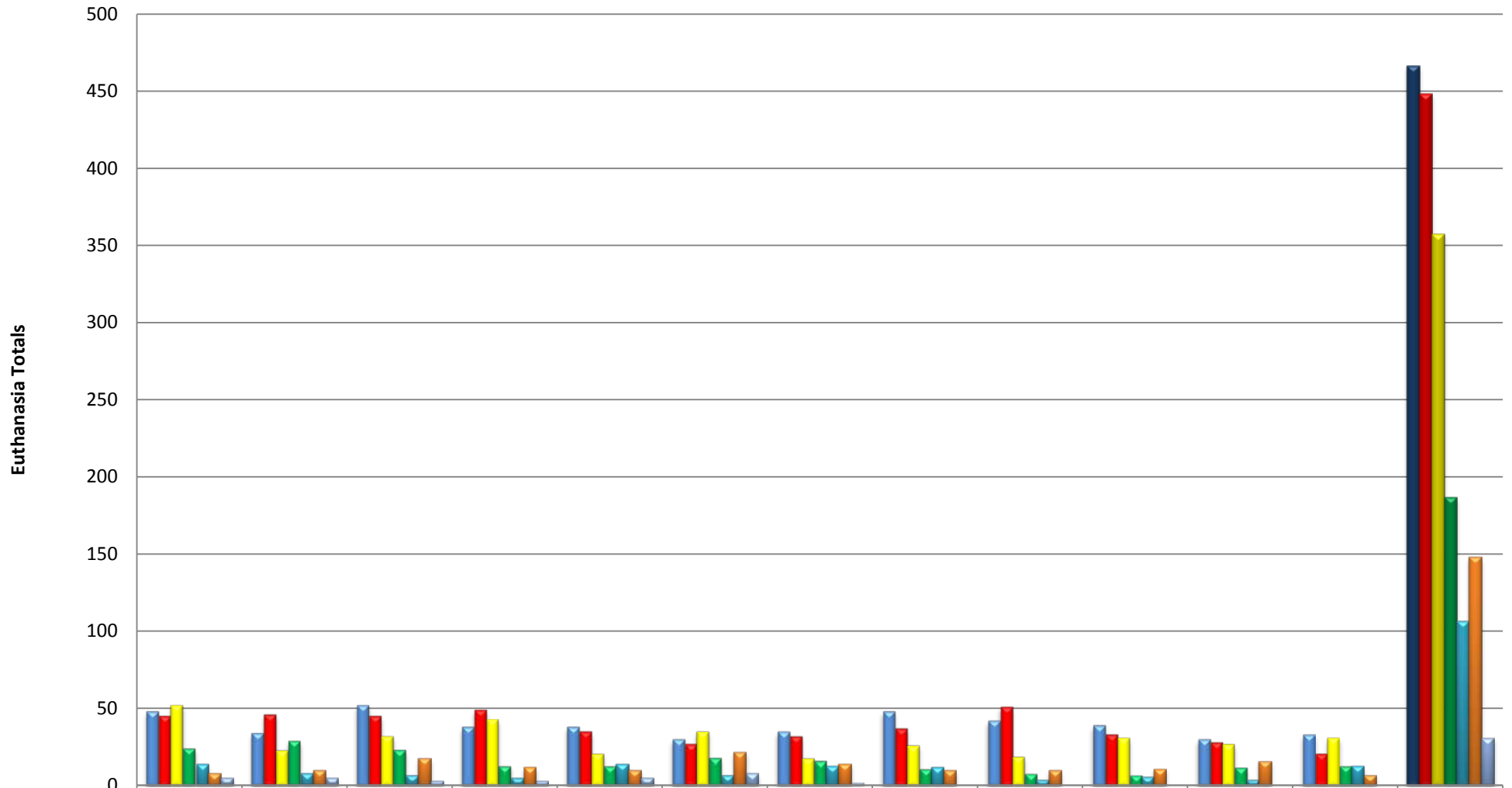


	July	August	September	October	November	December	January	February	March	April	May	June	Year's Average
■ 2009 to 2010	37%	28%	35%	21%	30%	19%	24%	29%	27%	25%	22%	24%	26%
■ 2010 to 2011	30%	31%	30%	33%	27%	22%	24%	25%	33%	21%	20%	16%	26%
■ 2011 to 2012	28%	18%	22%	27%	15%	24%	13%	17%	16%	25%	19%	19%	21%
■ 2012 to 2013	15%	21%	19%	10%	8%	11%	11%	8%	7%	5%	9%	10%	11%
■ 2013 to 2014	9%	6%	5%	4%	12%	5%	9%	9%	3%	5%	3%	8%	7%
■ 2014 to 2015	4%	6%	12%	7%	9%	11%	8%	7%	6%	8%	10%	5%	8%
■ 2015 to 2016	4%	4%	2%	2%	5%	6%	2%	0%	0%	0%	0%	0%	3%

# YCAS Dog Euthanasia Totals

## Fiscal Year 2009-2010 through January 31, 2016

(Not including Owner Euthanasia Request Dogs)

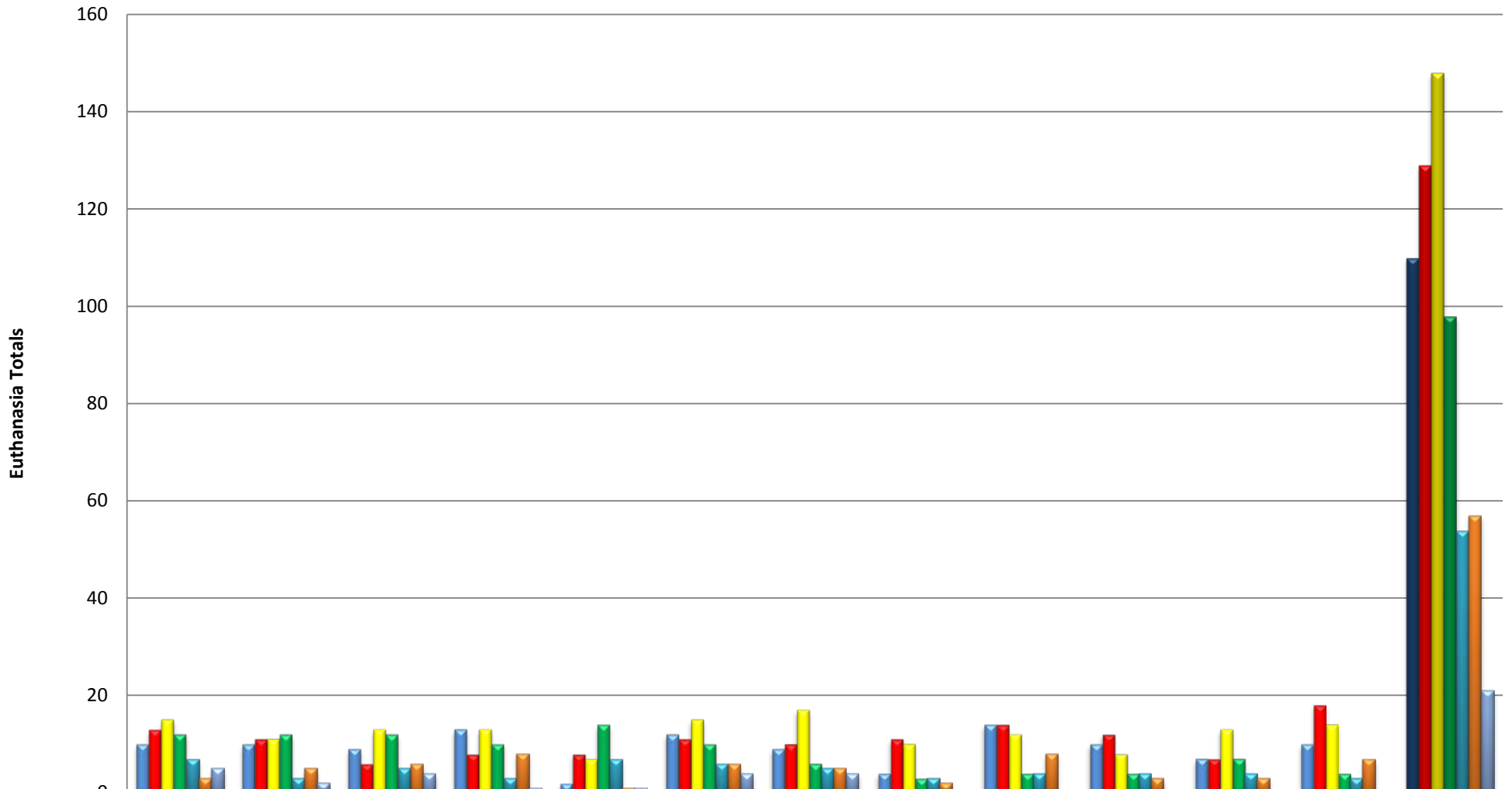


	July	August	September	October	November	December	January	February	March	April	May	June	Period Total
2009 to 2010	48	34	52	38	38	30	35	48	42	39	30	33	467
2010 to 2011	45	46	45	49	35	27	32	37	51	33	28	21	449
2011 to 2012	52	23	32	43	21	35	18	26	19	31	27	31	358
2012 to 2013	24	29	23	13	13	18	16	11	8	7	12	13	187
2013 to 2014	14	8	7	5	14	7	13	12	4	6	4	13	107
2014 to 2015	8	10	18	12	10	22	14	10	10	11	16	7	148
2015 to 2016	5	5	3	3	5	8	2	0	0	0	0	0	31

# YCAS Owned Dog - Owner Euthanasia Request Euthanasia Totals

## Fiscal Year 2009-2010 through January 31, 2016

(ONLY Owner Euthanasia Request Dogs Euthanized)

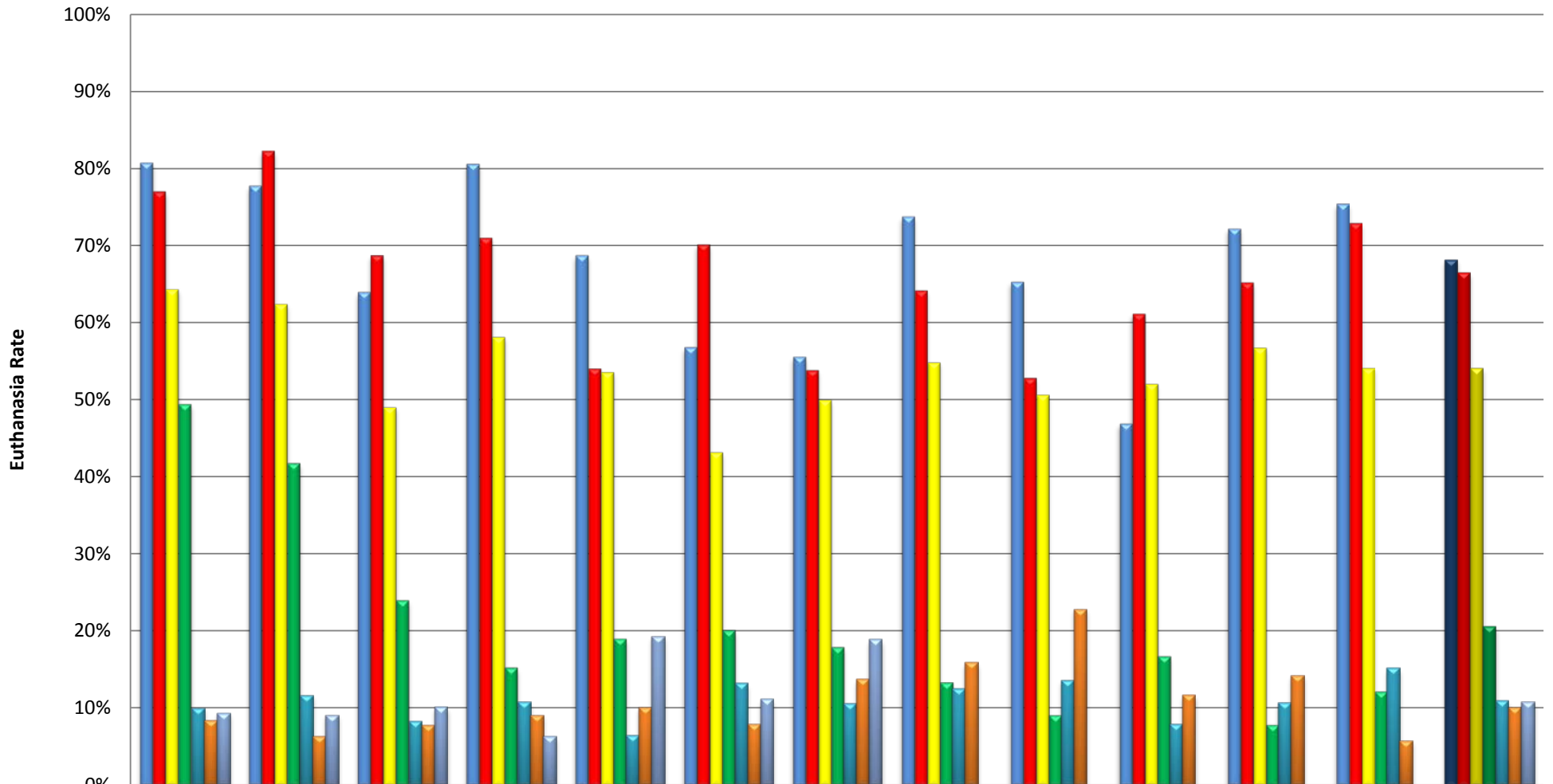


	July	August	September	October	November	December	January	February	March	April	May	June	Period Total
2009 to 2010	10	10	9	13	2	12	9	4	14	10	7	10	110
2010 to 2011	13	11	6	8	8	11	10	11	14	12	7	18	129
2011 to 2012	15	11	13	13	7	15	17	10	12	8	13	14	148
2012 to 2013	12	12	12	10	14	10	6	3	4	4	7	4	98
2013 to 2014	7	3	5	3	7	6	5	3	4	4	4	3	54
2014 to 2015	3	5	6	8	1	6	5	2	8	3	3	7	57
2015 to 2016	5	2	4	1	1	4	4	0	0	0	0	0	21

# YCAS Cat Euthanasia Rates

Fiscal Year 2009-2010 through January 31, 2016

(Not including Owner Euthanasia Request Cats or TNR Euthanized for Medical)

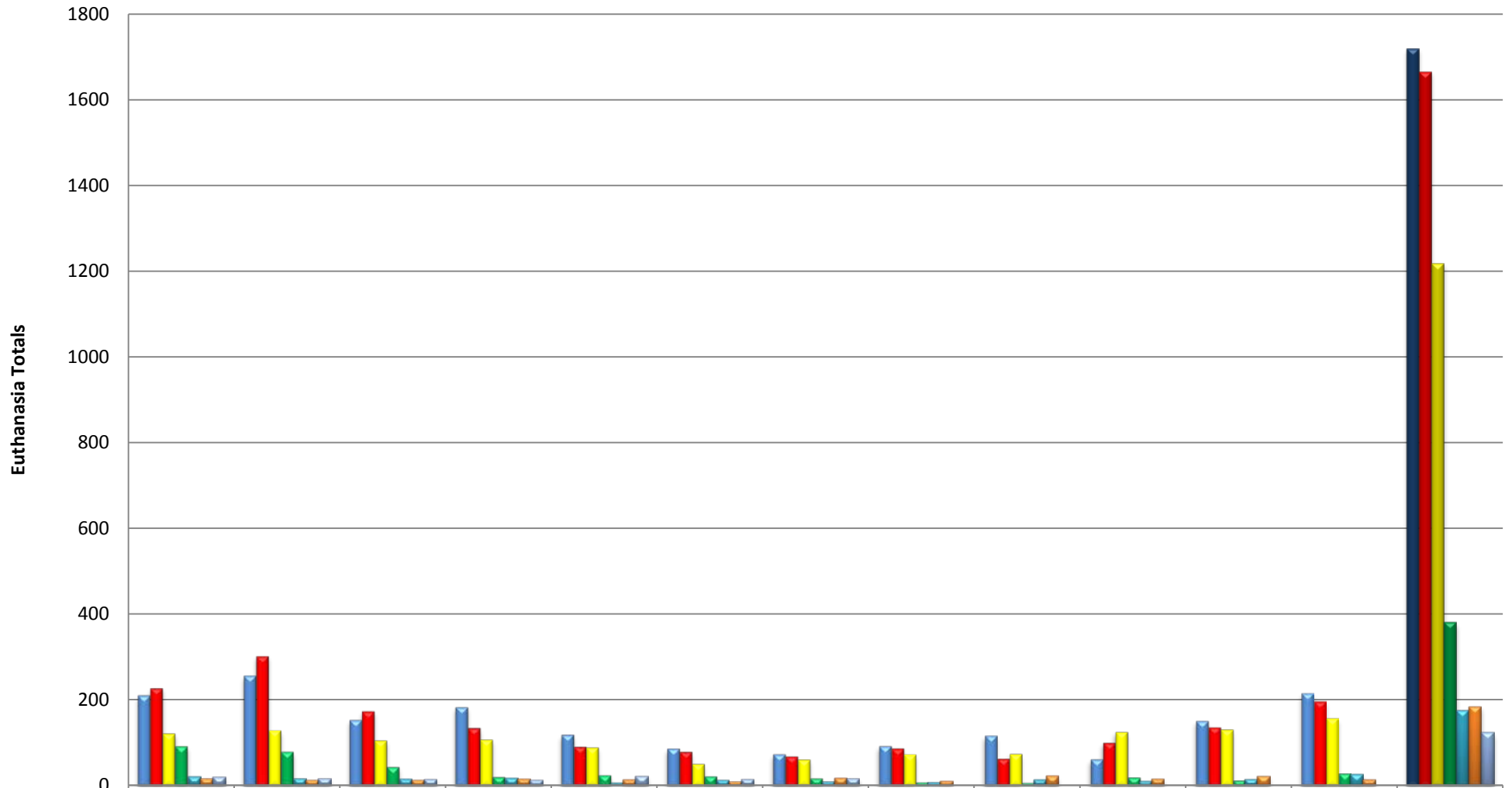


	July	August	September	October	November	December	January	February	March	April	May	June	Year's Average
2009 to 2010	81%	78%	64%	81%	69%	57%	56%	74%	65%	47%	72%	75%	68%
2010 to 2011	77%	82%	69%	71%	54%	70%	54%	64%	53%	61%	65%	73%	66%
2011 to 2012	64%	62%	49%	58%	54%	43%	50%	55%	51%	52%	57%	54%	54%
2012 to 2013	49%	42%	24%	15%	19%	20%	18%	13%	9%	17%	8%	12%	21%
2013 to 2014	10%	12%	8%	11%	7%	13%	11%	13%	14%	8%	11%	15%	11%
2014 to 2015	8%	6%	8%	9%	10%	8%	14%	16%	23%	12%	14%	6%	10%
2015 to 2016	9%	9%	10%	6%	19%	11%	19%	0%	0%	0%	0%	0%	11%

# YCAS Cat Euthanasia Totals

Fiscal Year 2009-2010 through January 31, 2016

(Not including Owner Euthanasia Request Cats or TNR Euthanized for Medical)



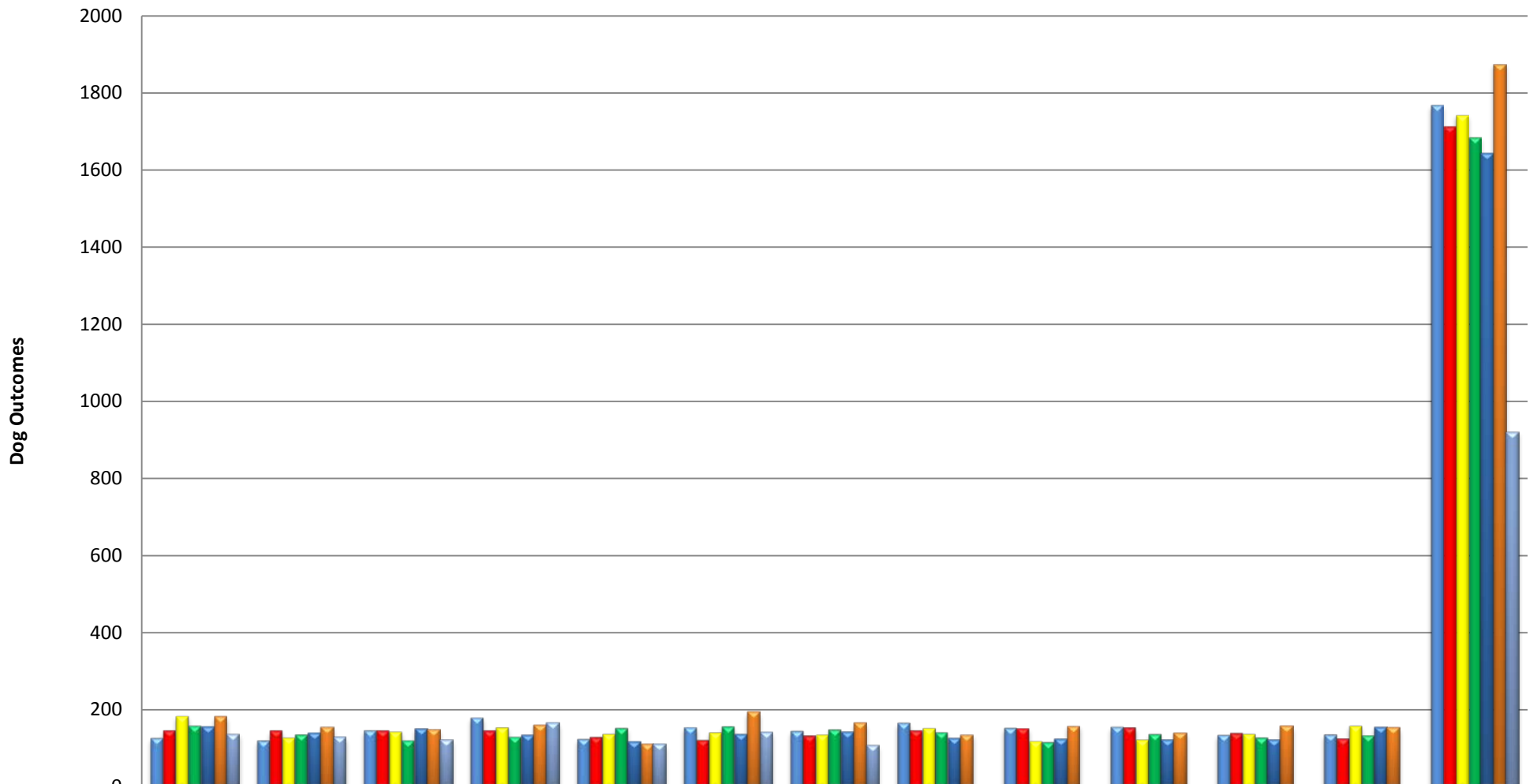
	July	August	September	October	November	December	January	February	March	April	May	June	Period Total
2009 to 2010	210	256	153	183	119	87	74	93	117	62	151	215	1720
2010 to 2011	228	302	174	135	92	80	69	88	64	101	137	197	1667
2011 to 2012	121	128	105	107	89	51	61	73	74	125	130	156	1220
2012 to 2013	92	79	44	21	25	23	18	9	8	20	13	29	381
2013 to 2014	20	17	15	18	6	14	10	9	13	11	16	27	176
2014 to 2015	17	14	14	15	13	10	18	11	22	15	23	13	185
2015 to 2016	21	17	16	14	23	16	17	0	0	0	0	0	124



# YCAS Total Dog Outcomes by Month ("At Risk" Dogs)

Fiscal Years 2009-2010 through January 31, 2016

(Non-Spay/Neuter, Excluding Foster Return, Non-Owner Euthanasia Request)

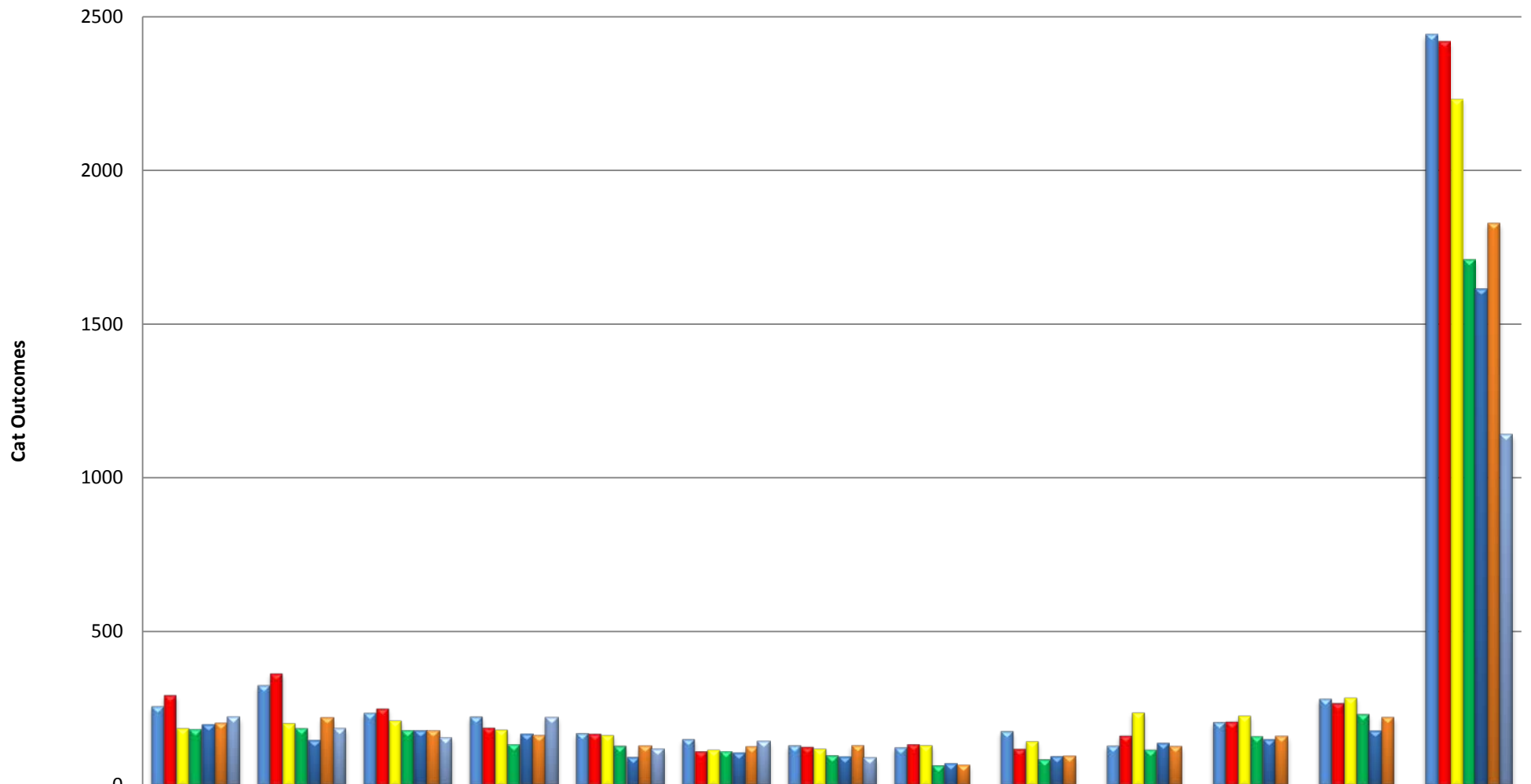


	July	August	September	October	November	December	January	February	March	April	May	June	Period Total
2009 to 2010	129	122	149	182	126	157	147	168	155	158	137	138	1768
2010 to 2011	149	148	149	148	131	124	135	149	154	156	142	128	1713
2011 to 2012	186	130	146	157	140	144	138	155	121	125	140	161	1743
2012 to 2013	161	138	123	132	155	159	151	144	118	139	130	136	1686
2013 to 2014	156	140	152	137	117	139	145	128	126	123	124	158	1645
2014 to 2015	183	157	150	162	111	195	167	137	160	141	159	154	1876
2015 to 2016	139	130	123	167	111	143	110	0	0	0	0	0	923

# YCAS Total Cat Outcomes by Month ("At Risk" Cat)

Fiscal Years 2009-2010 through January 31, 2016

(Non-Spay/Neuter, Excluding Foster Return, Non Owner Euthanasia Request)

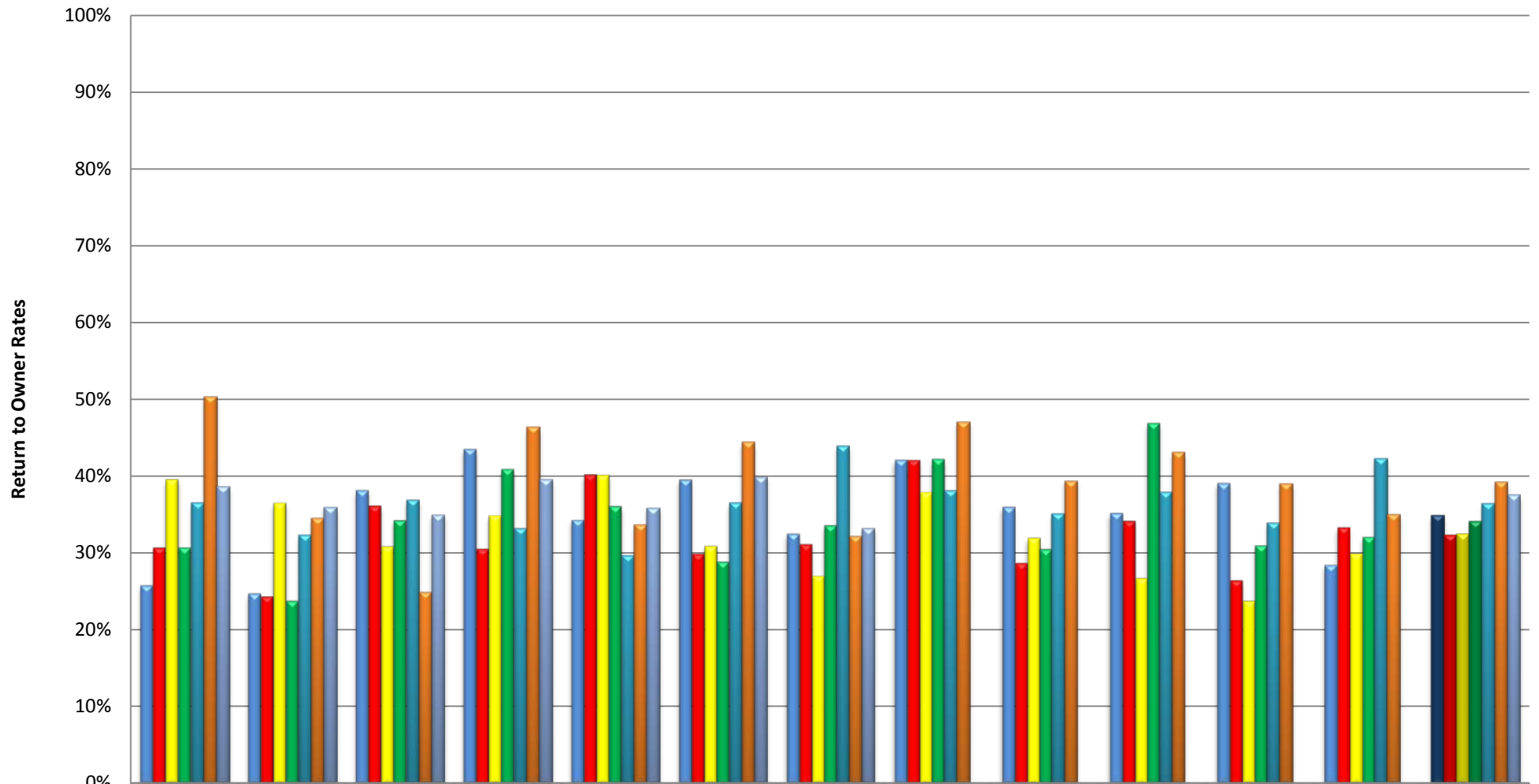


	July	August	September	October	November	December	January	February	March	April	May	June	Period Total
2009 to 2010	260	329	239	227	173	153	133	126	179	132	209	285	2445
2010 to 2011	296	367	253	190	170	114	128	137	121	165	210	270	2421
2011 to 2012	188	205	214	184	166	118	122	133	146	240	229	288	2233
2012 to 2013	186	189	183	137	131	114	100	67	87	119	163	235	1711
2013 to 2014	199	146	181	166	92	106	94	72	95	138	149	178	1616
2014 to 2015	202	221	180	164	129	126	131	69	96	128	161	223	1830
2015 to 2016	224	186	158	223	119	143	90	0	0	0	0	0	1143

# YCAS Stray Dog Return to Owner Rates

Fiscal Years 2009-2010 through January 31, 2016

*\*Note - Calculation method corrected 10/14 - filtered to only Stray Intakes.*

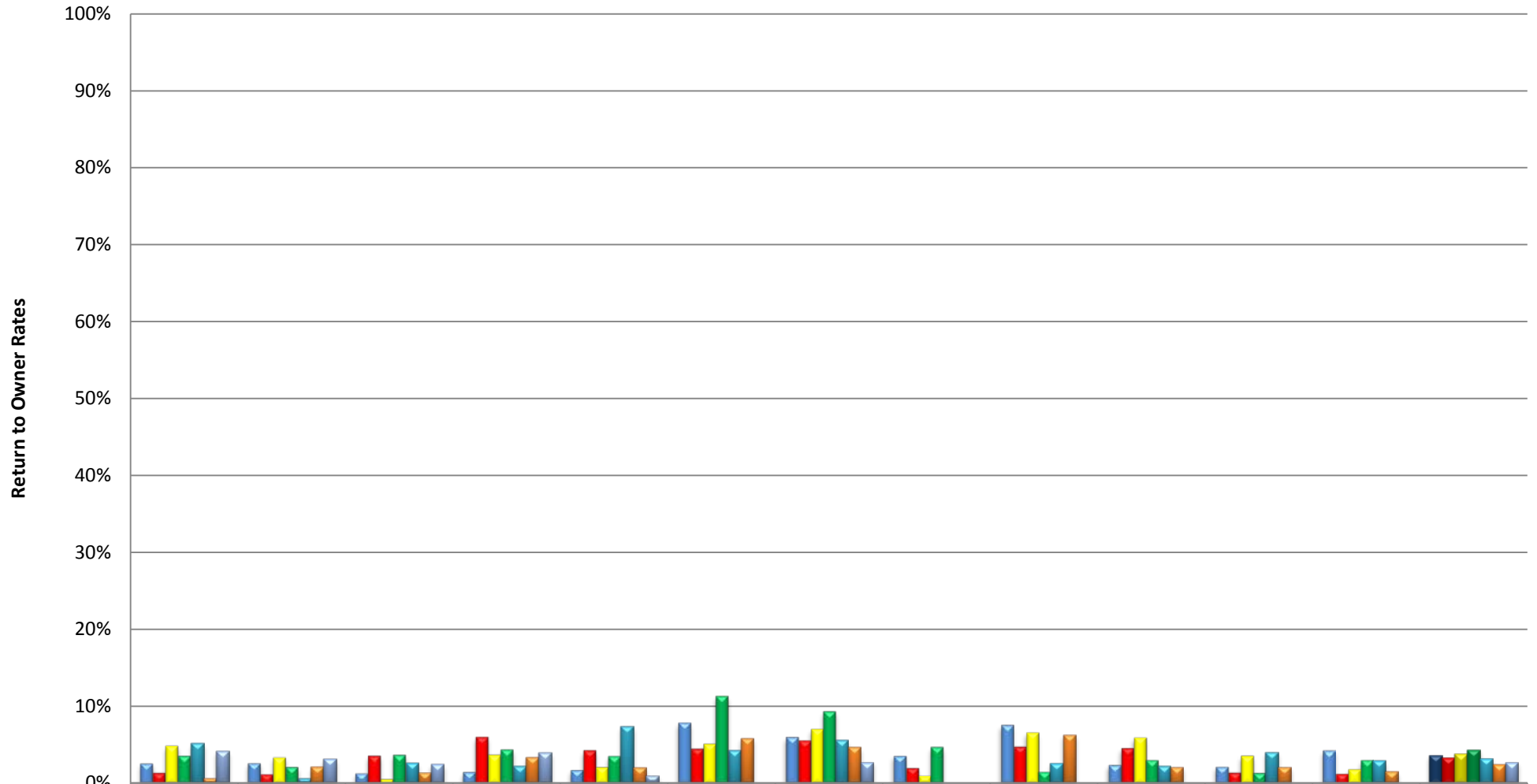


	July	August	September	October	November	December	January	February	March	April	May	June	Year's Average
2009 to 2010	26%	25%	38%	44%	34%	40%	32%	42%	36%	35%	39%	28%	35%
2010 to 2011	31%	24%	36%	31%	40%	30%	31%	42%	29%	34%	26%	33%	32%
2011 to 2012	40%	37%	31%	35%	40%	31%	27%	38%	32%	27%	24%	30%	33%
2012 to 2013	31%	24%	34%	41%	36%	29%	34%	42%	30%	47%	31%	32%	34%
2013 to 2014	37%	32%	37%	33%	30%	37%	44%	38%	35%	38%	34%	42%	36%
2014 to 2015	50%	35%	25%	46%	34%	44%	32%	47%	39%	43%	39%	35%	39%
2015 to 2016	39%	36%	35%	40%	36%	40%	33%	0%	0%	0%	0%	0%	38%

# YCAS Stray Cat Return to Owner Rates

Fiscal Years 2009-2010 through January 31, 2016

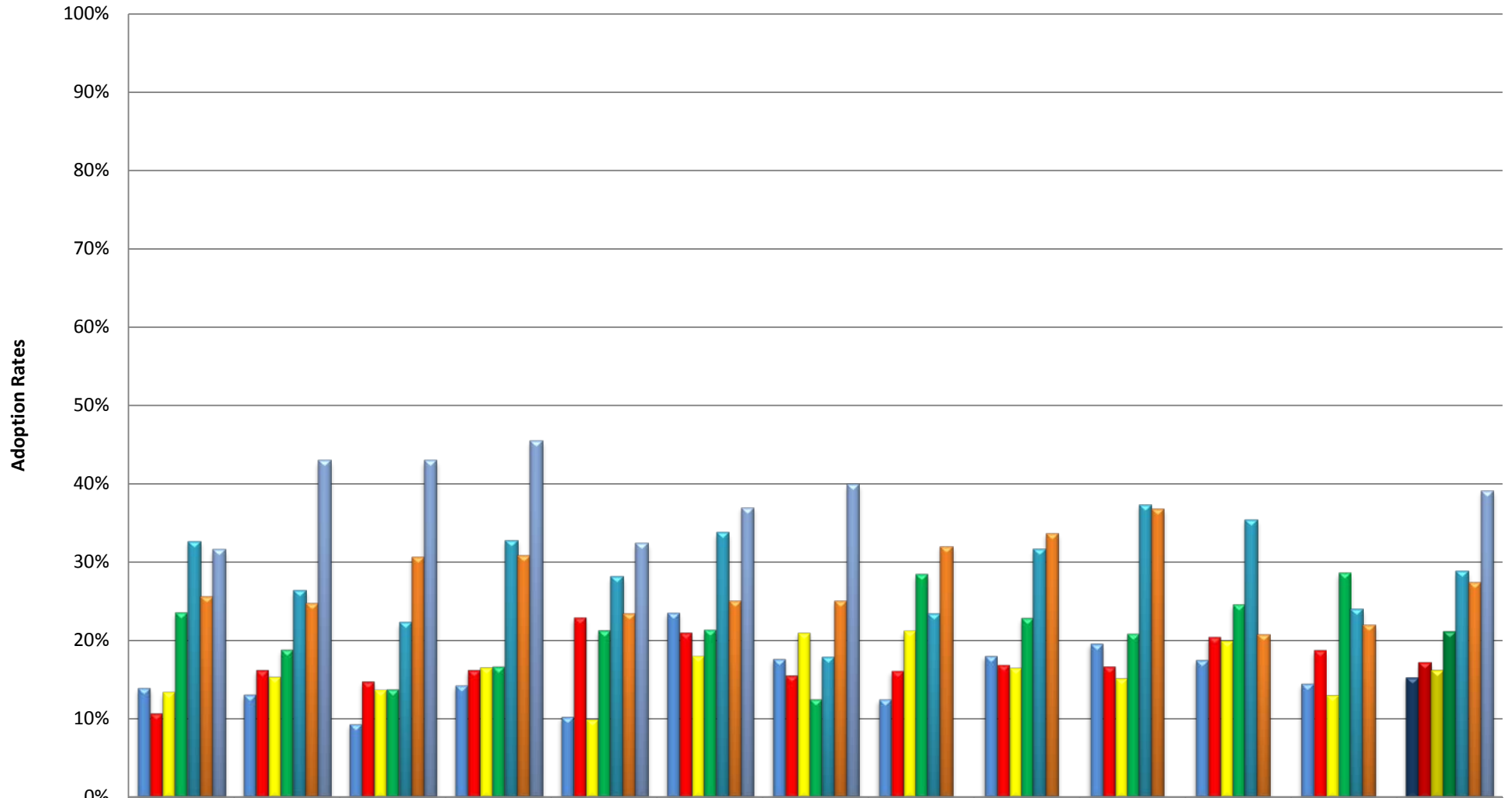
*\*Note - Calculation method corrected 10/14 - filtered to calculate only Stray intakes.*



	July	August	September	October	November	December	January	February	March	April	May	June	Year's Average
2009 to 2010	3%	3%	1%	2%	2%	8%	6%	4%	8%	2%	2%	4%	4%
2010 to 2011	1%	1%	4%	6%	4%	4%	6%	2%	5%	5%	1%	1%	3%
2011 to 2012	5%	3%	1%	4%	2%	5%	7%	1%	7%	6%	4%	2%	4%
2012 to 2013	4%	2%	4%	4%	4%	11%	9%	5%	2%	3%	1%	3%	4%
2013 to 2014	5%	1%	3%	2%	7%	4%	6%	0%	3%	2%	4%	3%	3%
2014 to 2015	1%	2%	1%	3%	2%	6%	5%	0%	6%	2%	2%	2%	2%
2015 to 2016	4%	3%	3%	4%	1%	0%	3%	0%	0%	0%	0%	0%	3%

# YCAS Dog Adoption Rates

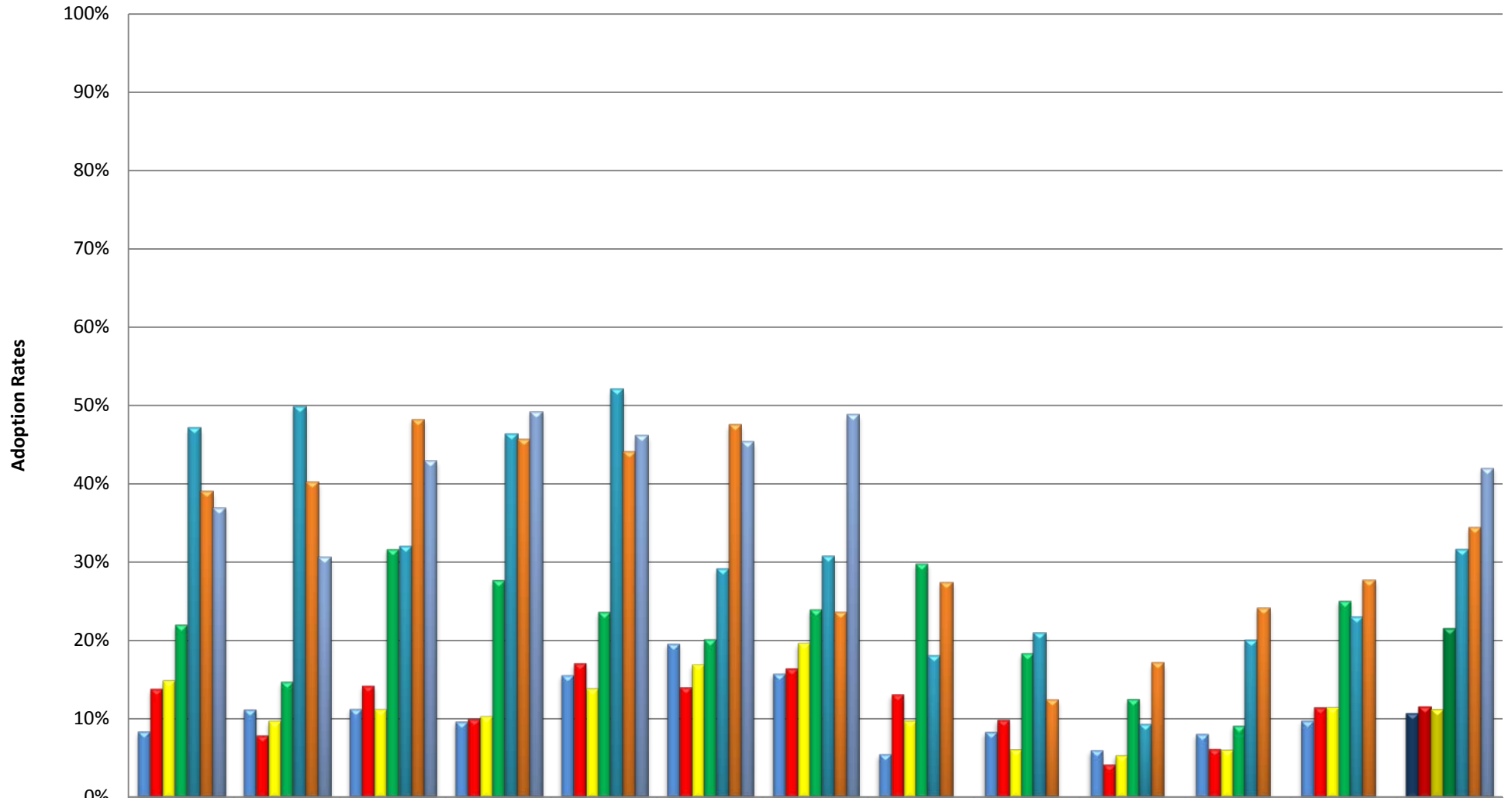
## Fiscal Years 2009-2010 through January 31, 2016



	July	August	September	October	November	December	January	February	March	April	May	June	Year's Average
■ 2009 to 2010	14%	13%	9%	14%	10%	24%	18%	13%	18%	20%	18%	14%	15%
■ 2010 to 2011	11%	16%	15%	16%	23%	21%	16%	16%	17%	17%	20%	19%	17%
■ 2011 to 2012	13%	15%	14%	17%	10%	18%	21%	21%	17%	15%	20%	13%	16%
■ 2012 to 2013	24%	19%	14%	17%	21%	21%	13%	28%	23%	21%	25%	29%	21%
■ 2013 to 2014	33%	26%	22%	33%	28%	34%	18%	23%	32%	37%	35%	24%	29%
■ 2014 to 2015	26%	25%	31%	31%	23%	25%	25%	32%	34%	37%	21%	22%	28%
■ 2015 to 2016	32%	43%	43%	46%	32%	37%	40%	0%	0%	0%	0%	0%	39%

# YCAS Cat Adoption Rates

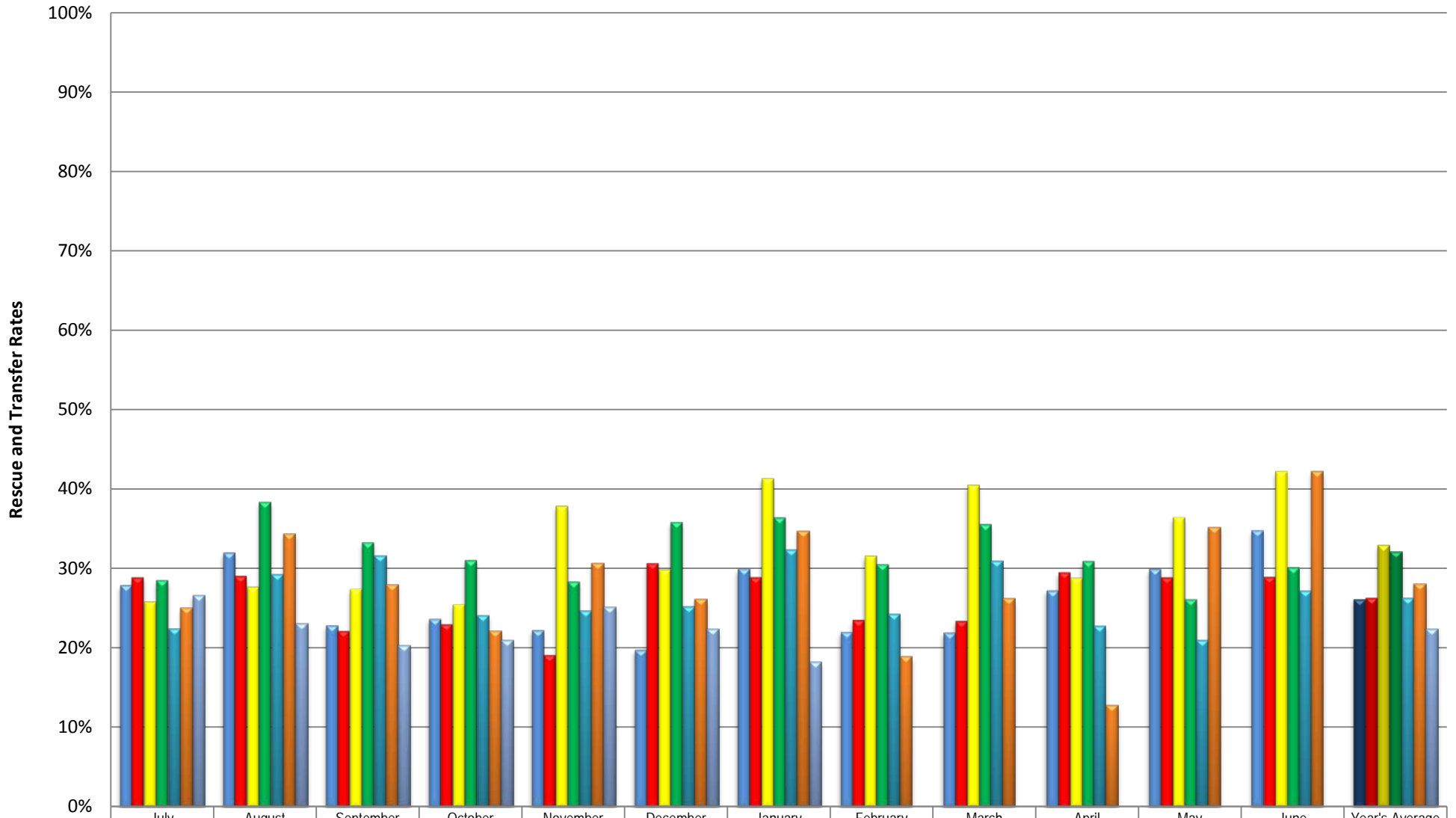
## Fiscal Years 2009-2010 through January 31, 2016



	July	August	September	October	November	December	January	February	March	April	May	June	Year's Average
2009 to 2010	8%	11%	11%	10%	16%	20%	16%	6%	8%	6%	8%	10%	11%
2010 to 2011	14%	8%	14%	10%	17%	14%	16%	13%	10%	4%	6%	11%	12%
2011 to 2012	15%	10%	11%	10%	14%	17%	20%	10%	6%	5%	6%	11%	11%
2012 to 2013	22%	15%	32%	28%	24%	20%	24%	30%	18%	13%	9%	25%	22%
2013 to 2014	47%	50%	32%	46%	52%	29%	31%	18%	21%	9%	20%	23%	32%
2014 to 2015	39%	40%	48%	46%	44%	48%	24%	28%	13%	17%	24%	28%	35%
2015 to 2016	37%	31%	43%	49%	46%	45%	49%	0%	0%	0%	0%	0%	42%

# YCAS Dog Rescue and Transfer Rates

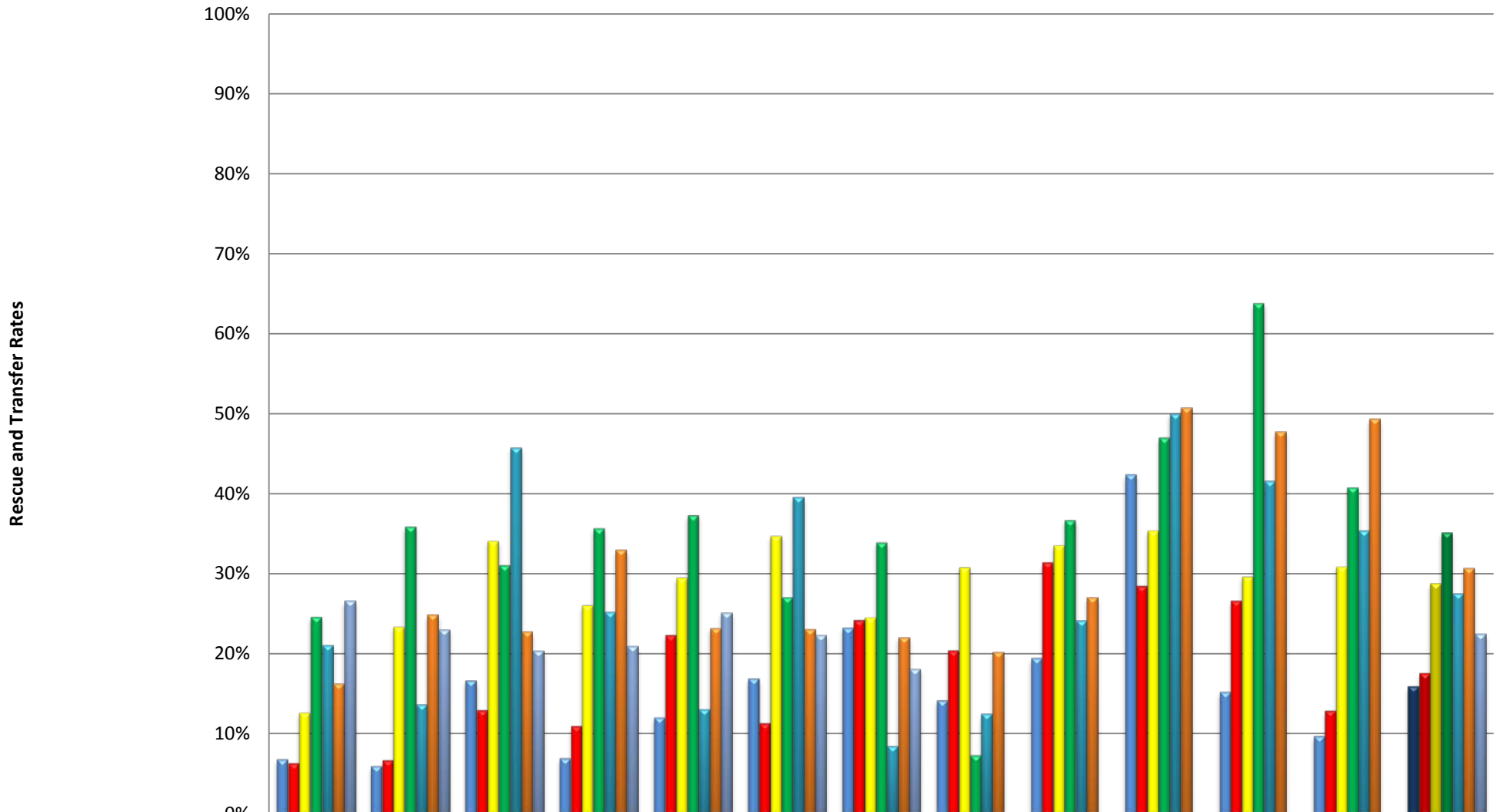
## Fiscal Years 2009-2010 through January 31, 2016



	July	August	September	October	November	December	January	February	March	April	May	June	Year's Average
■ 2009 to 2010	28%	32%	23%	24%	22%	20%	30%	22%	22%	27%	30%	35%	26%
■ 2010 to 2011	29%	29%	22%	23%	19%	31%	29%	23%	23%	29%	29%	29%	26%
■ 2011 to 2012	26%	28%	27%	25%	38%	30%	41%	32%	40%	29%	36%	42%	33%
■ 2012 to 2013	29%	38%	33%	31%	28%	36%	36%	31%	36%	31%	26%	30%	32%
■ 2013 to 2014	22%	29%	32%	24%	25%	25%	32%	24%	31%	23%	21%	27%	26%
■ 2014 to 2015	25%	34%	28%	22%	31%	26%	35%	19%	26%	13%	35%	42%	28%
■ 2015 to 2016	27%	23%	20%	21%	25%	22%	18%	0%	0%	0%	0%	0%	22%

# YCAS Cat Rescue and Transfer Rates

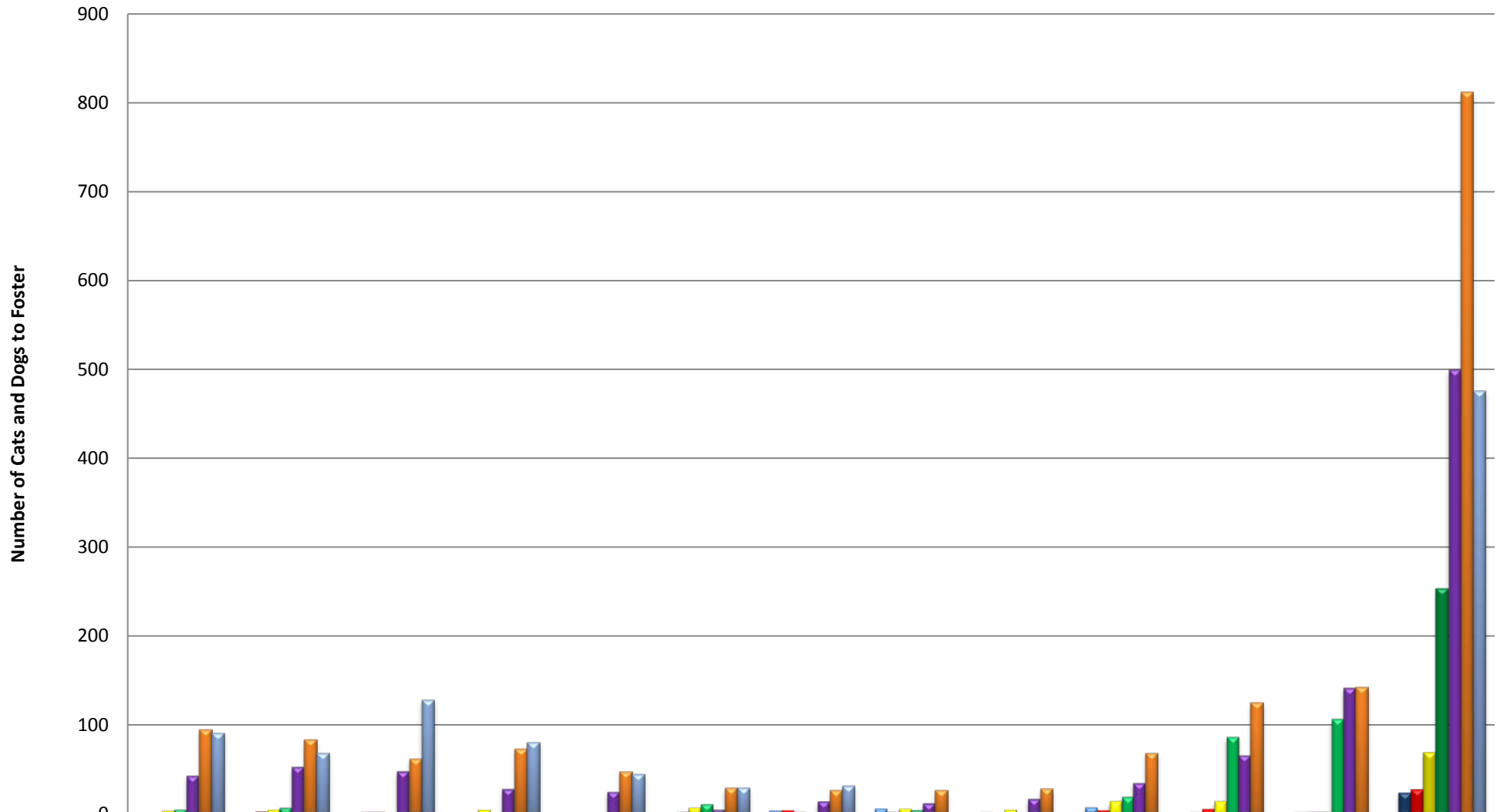
## Fiscal Years 2009-2010 through January 31, 2016



	July	August	September	October	November	December	January	February	March	April	May	June	Year's Average
■ Cat Rescue and Transfer 2009 to 2010	7%	6%	17%	7%	12%	17%	23%	14%	20%	42%	15%	10%	16%
■ Cat Rescue and Transfer 2010 to 2011	6%	7%	13%	11%	22%	11%	24%	20%	31%	28%	27%	13%	18%
■ Cat Rescue and Transfer 2011 to 2012	13%	23%	34%	26%	30%	35%	25%	31%	34%	35%	30%	31%	29%
■ Cat Rescue and Transfer 2012 to 2013	25%	36%	31%	36%	37%	27%	34%	7%	37%	47%	64%	41%	35%
■ Cat Rescue and Transfer 2013 to 2014	21%	14%	46%	25%	13%	40%	9%	13%	24%	50%	42%	35%	28%
■ Cat Rescue and Transfer 2014 to 2015	16%	25%	23%	33%	23%	23%	22%	20%	27%	51%	48%	49%	31%
■ Cat Rescue and Transfer 2015 to 2016	27%	23%	20%	21%	25%	22%	18%	0%	0%	0%	0%	0%	22%

# YCAS Cats and Dogs to Foster

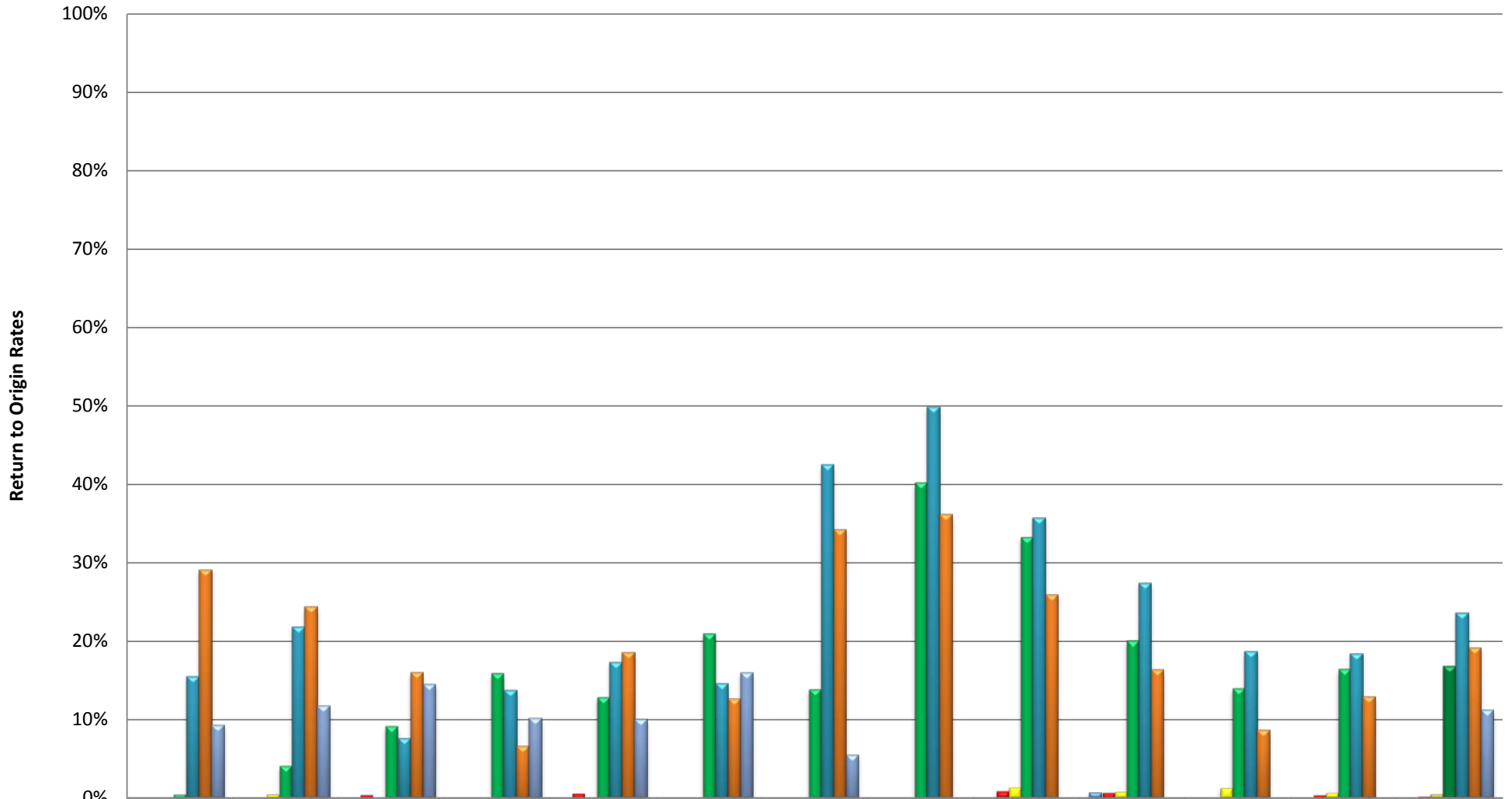
## Fiscal Years 2009-2010 through January 31, 2016



	July	August	September	October	November	December	January	February	March	April	May	June	Period Total
2009 to 2010	1	0	0	0	0	0	4	6	2	7	2	2	24
2010 to 2011	1	3	2	1	1	2	4	2	1	4	5	2	28
2011 to 2012	4	5	3	5	1	7	3	6	5	14	14	3	70
2012 to 2013	6	8	3	3	1	12	1	5	1	20	87	107	254
2013 to 2014	44	54	49	29	26	6	15	13	18	36	67	143	500
2014 to 2015	95	84	62	73	48	30	27	27	29	69	125	143	812
2015 to 2016	91	69	129	81	45	30	32	0	0	0	0	0	477

# YCAS Cat Return to Origin Rates

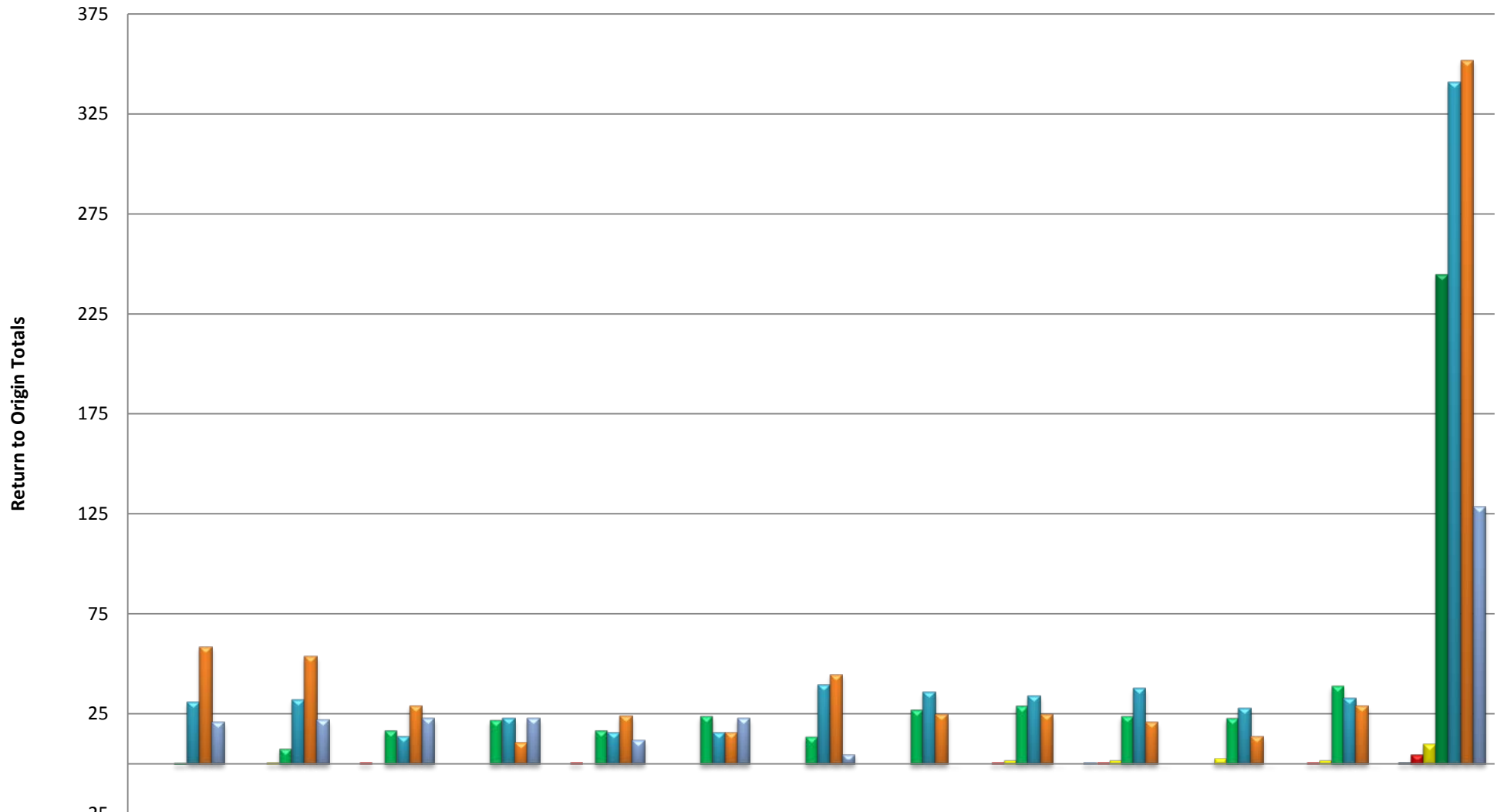
## Fiscal Years 2009-2010 through January 31, 2016



	July	August	September	October	November	December	January	February	March	April	May	June	Year's Average
■ 2009 to 2010	0%	0%	0%	0%	0%	0%	0%	0%	0%	1%	0%	0%	0%
■ 2010 to 2011	0%	0%	0%	0%	1%	0%	0%	0%	1%	1%	0%	0%	0%
■ 2011 to 2012	0%	0%	0%	0%	0%	0%	0%	0%	1%	1%	1%	1%	0%
■ 2012 to 2013	1%	4%	9%	16%	13%	21%	14%	40%	33%	20%	14%	17%	17%
■ 2013 to 2014	16%	22%	8%	14%	17%	15%	43%	50%	36%	28%	19%	19%	24%
■ 2014 to 2015	29%	24%	16%	7%	19%	13%	34%	36%	26%	16%	9%	13%	19%
■ 2015 to 2016	9%	12%	15%	10%	10%	16%	6%	0%	0%	0%	0%	0%	11%

# YCAS Cat Return to Origin Totals

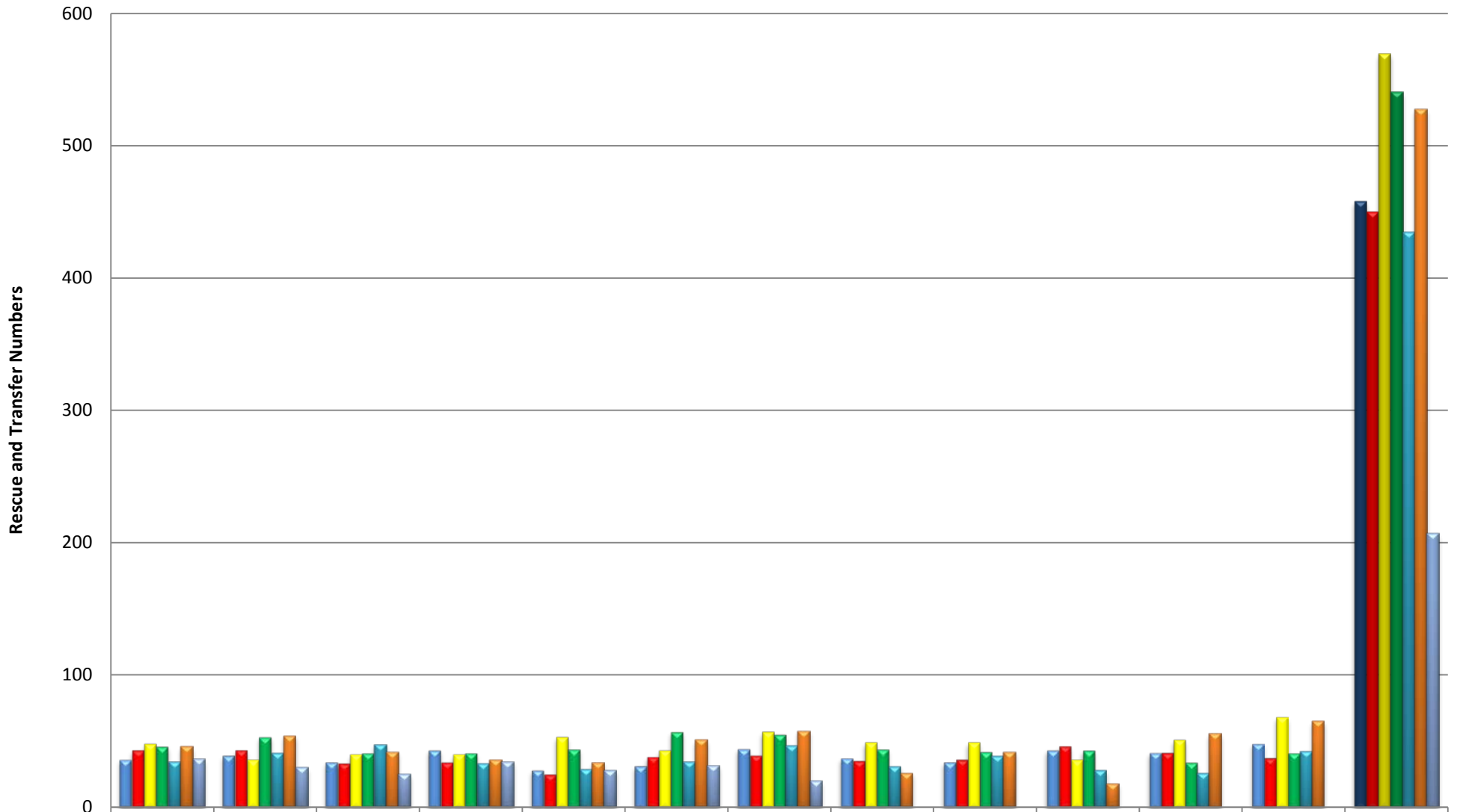
## Fiscal Years 2009-2010 through January 31, 2016



	July	August	September	October	November	December	January	February	March	April	May	June	Period Total
■ 2009 to 2010	0	0	0	0	0	0	0	0	0	1	0	0	1
■ 2010 to 2011	0	0	1	0	1	0	0	0	1	1	0	1	5
■ 2011 to 2012	0	1	0	0	0	0	0	0	2	2	3	2	10
■ 2012 to 2013	1	8	17	22	17	24	14	27	29	24	23	39	245
■ 2013 to 2014	31	32	14	23	16	16	40	36	34	38	28	33	341
■ 2014 to 2015	59	54	29	11	24	16	45	25	25	21	14	29	352
■ 2015 to 2016	21	22	23	23	12	23	5	0	0	0	0	0	129

# YCAS Dog Rescue and Transfer Numbers

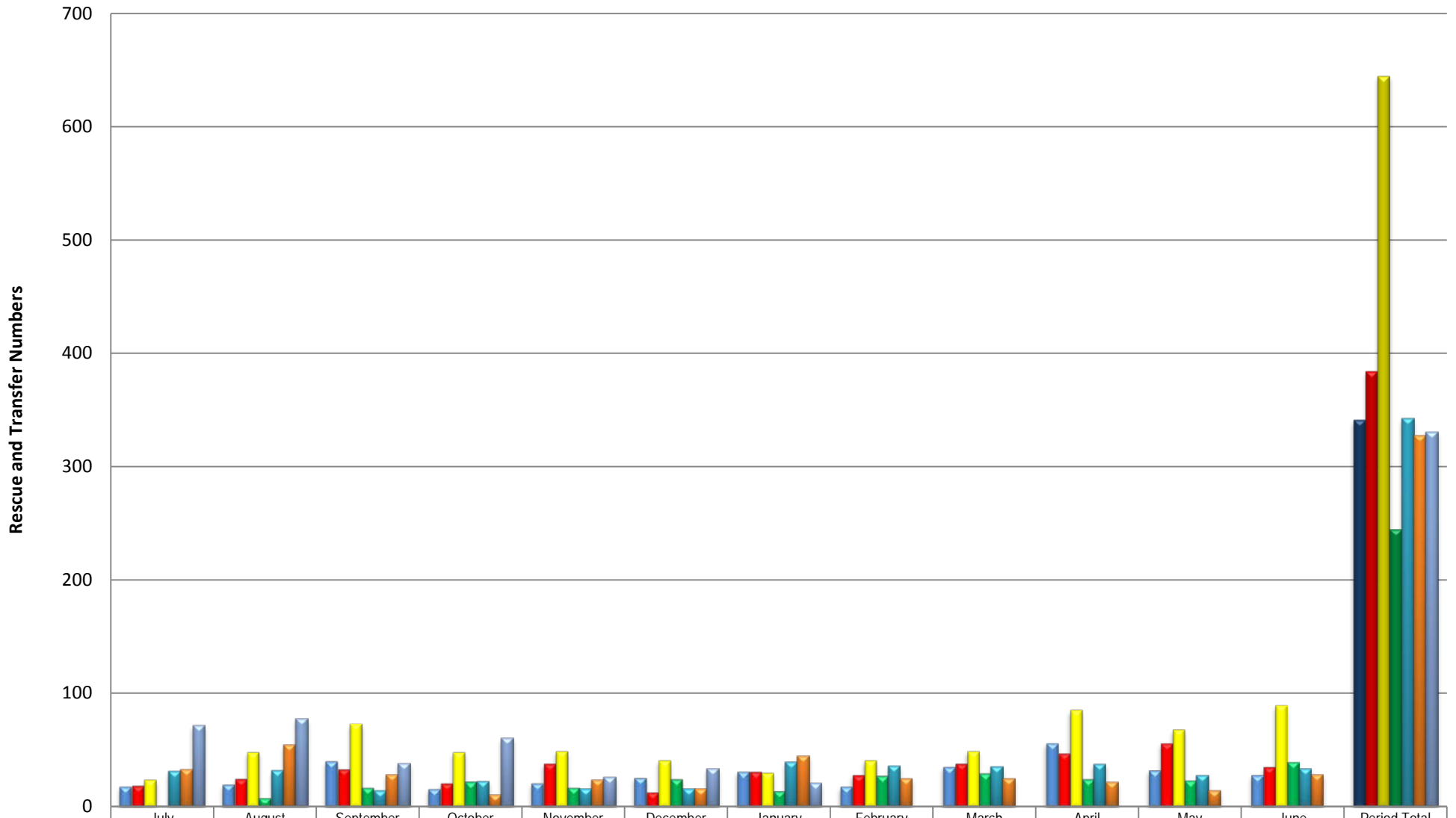
Fiscal Years 2009-2010 through January 31, 2016



	July	August	September	October	November	December	January	February	March	April	May	June	Period Total
2009 to 2010	36	39	34	43	28	31	44	37	34	43	41	48	458
2010 to 2011	43	43	33	34	25	38	39	35	36	46	41	37	450
2011 to 2012	48	36	40	40	53	43	57	49	49	36	51	68	570
2012 to 2013	46	53	41	41	44	57	55	44	42	43	34	41	541
2013 to 2014	35	41	48	33	29	35	47	31	39	28	26	43	435
2014 to 2015	46	54	42	36	34	51	58	26	42	18	56	65	528
2015 to 2016	37	30	25	35	28	32	20	0	0	0	0	0	207

# YCAS Cat Rescue and Transfer Numbers

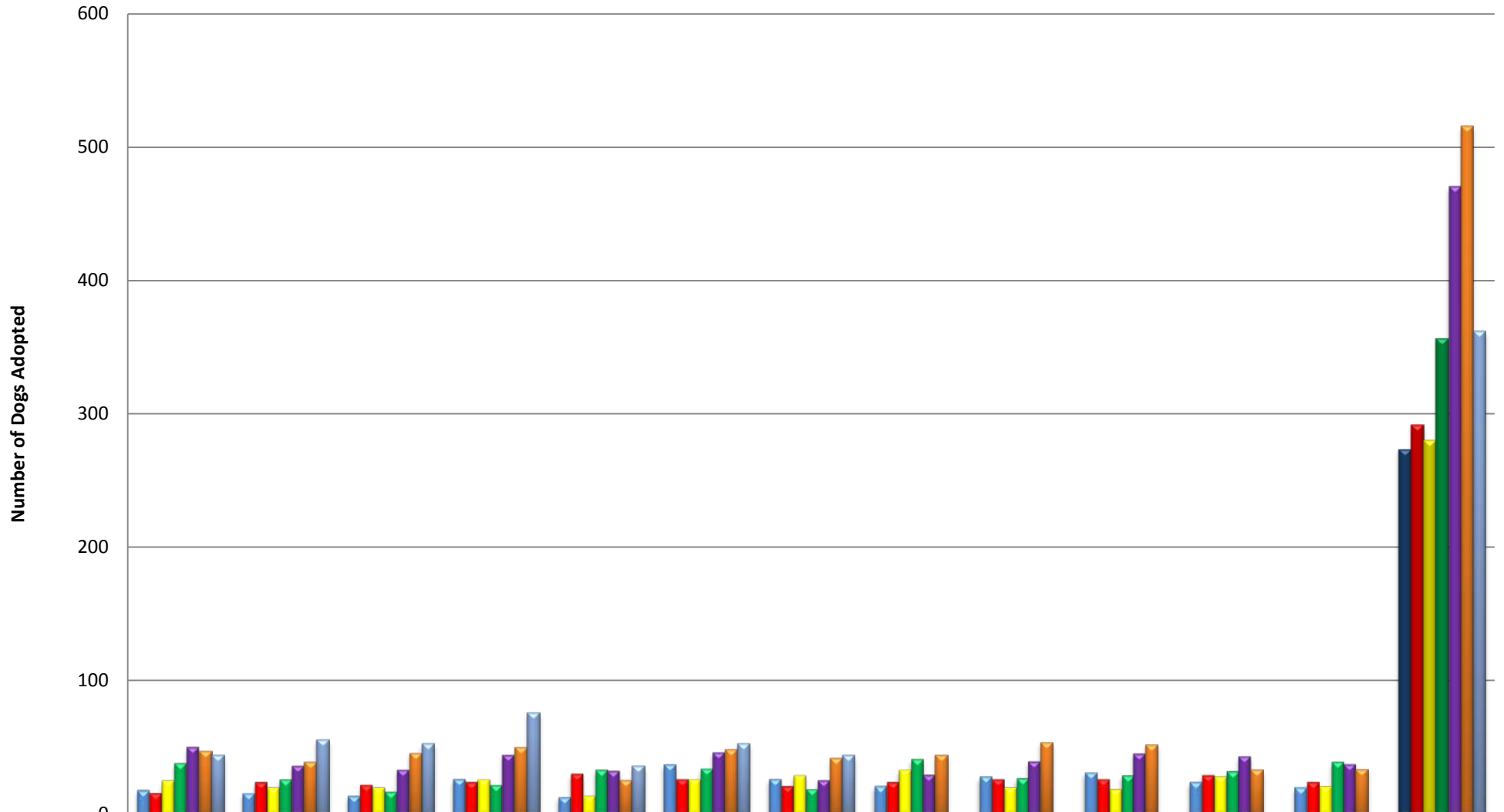
## Fiscal Years 2009-2010 through January 31, 2016



	July	August	September	October	November	December	January	February	March	April	May	June	Period Total
■ 2009 to 2010	18	20	40	16	21	26	31	18	35	56	32	28	341
■ 2010 to 2011	19	25	33	21	38	13	31	28	38	47	56	35	384
■ 2011 to 2012	24	48	73	48	49	41	30	41	49	85	68	89	645
■ 2012 to 2013	1	8	17	22	17	24	14	27	29	24	23	39	245
■ 2013 to 2014	31	32	14	23	16	16	40	36	35	38	28	34	343
■ 2014 to 2015	33	55	29	11	24	16	45	25	25	22	14	29	328
■ 2015 to 2016	72	78	39	61	26	34	21	0	0	0	0	0	331

# YCAS Dog Adoptions

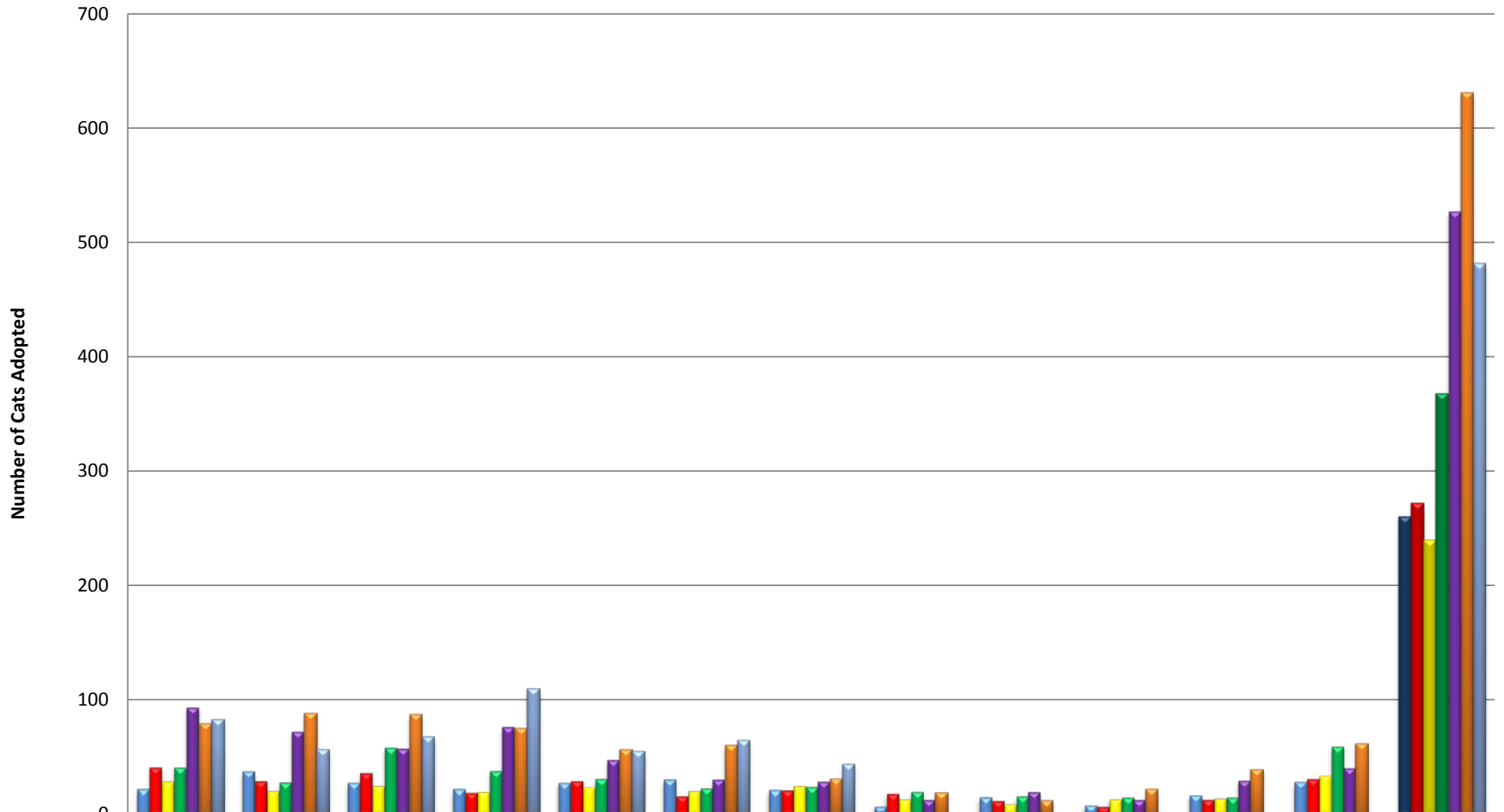
## Fiscal Years 2009-2010 through January 31, 2016



	July	August	September	October	November	December	January	February	March	April	May	June	Period Total
2009 to 2010	18	16	14	26	13	37	26	21	28	31	24	20	274
2010 to 2011	16	24	22	24	30	26	21	24	26	26	29	24	292
2011 to 2012	25	20	20	26	14	26	29	33	20	19	28	21	281
2012 to 2013	38	26	17	22	33	34	19	41	27	29	32	39	357
2013 to 2014	51	37	34	45	33	47	26	30	40	46	44	38	471
2014 to 2015	47	39	46	50	26	49	42	44	54	52	33	34	516
2015 to 2016	44	56	53	76	36	53	44	0	0	0	0	0	362

# YCAS Cat Adoptions

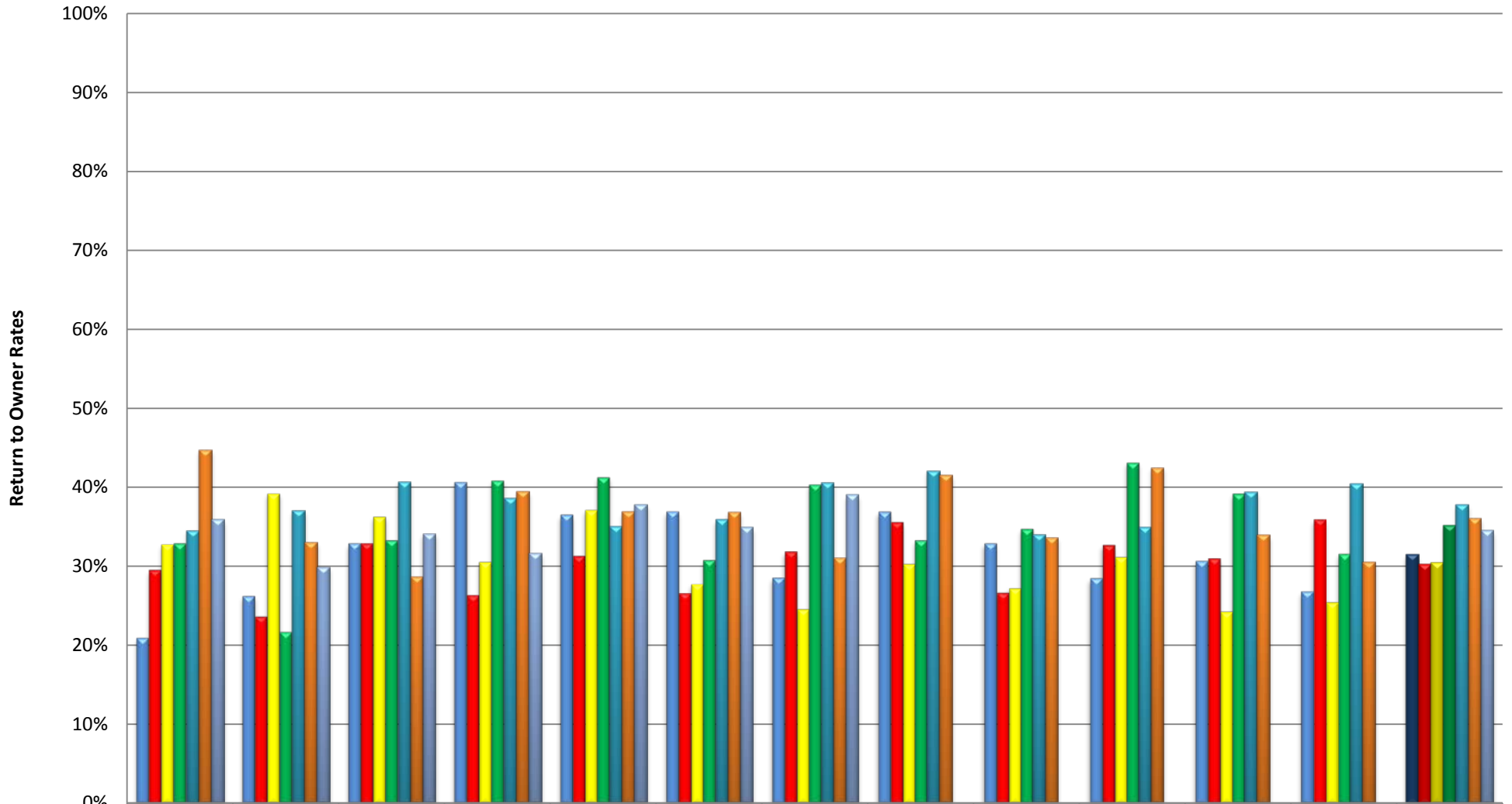
Fiscal Years 2009-2010 through January 31, 2016



	July	August	September	October	November	December	January	February	March	April	May	June	Period Total
2009 to 2010	22	37	27	22	27	30	21	7	15	8	17	28	261
2010 to 2011	41	29	36	19	29	16	21	18	12	7	13	31	272
2011 to 2012	28	20	24	19	23	20	24	13	9	13	14	33	240
2012 to 2013	41	28	58	38	31	23	24	20	16	15	15	59	368
2013 to 2014	94	73	58	77	48	31	29	13	20	13	30	41	527
2014 to 2015	79	89	87	75	57	60	31	19	12	22	39	62	632
2015 to 2016	83	57	68	110	55	65	44	0	0	0	0	0	482

# YCAS Dog Return to Owner Rates (Including Non-Stray Intake)

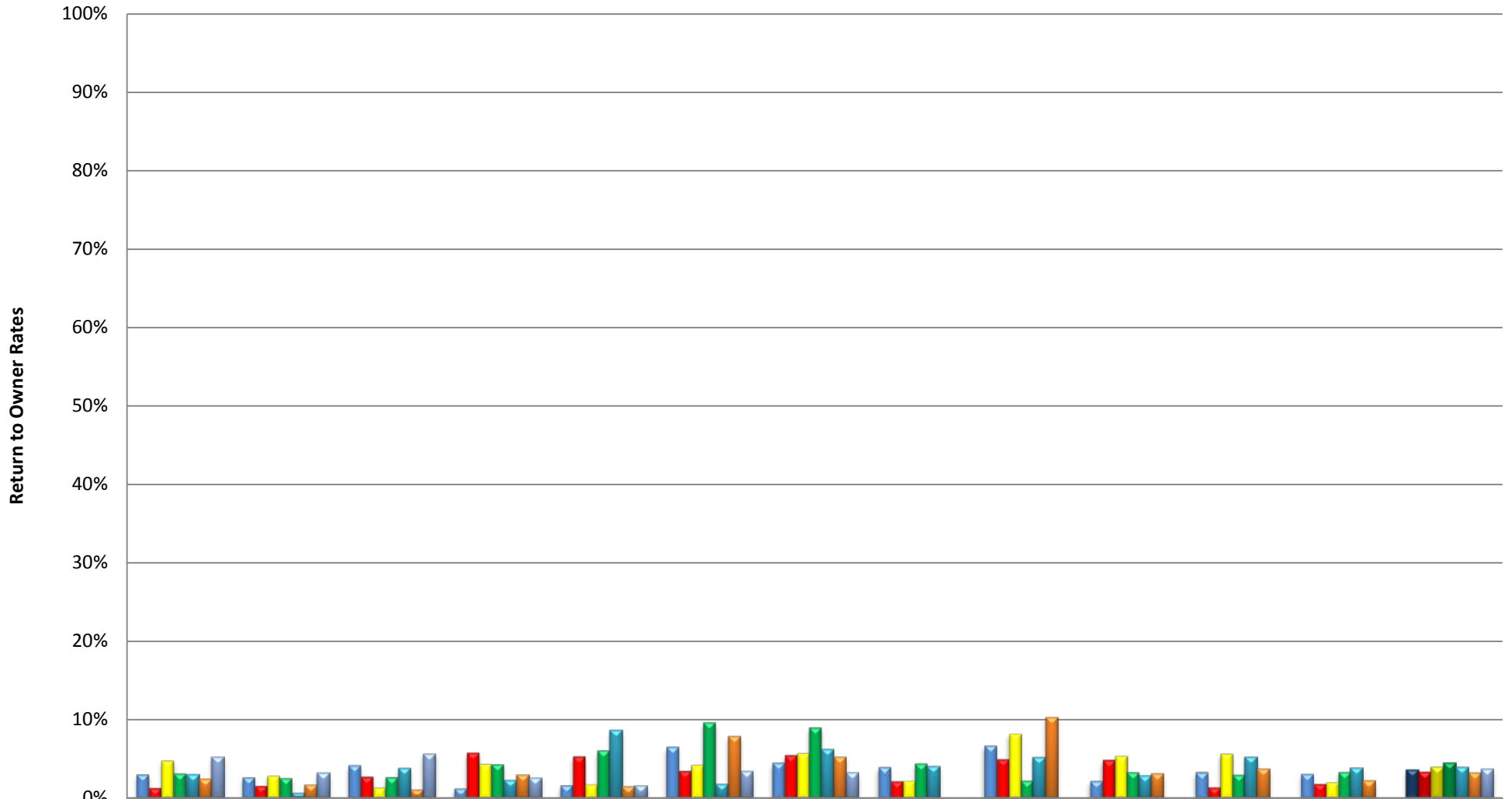
## Fiscal Years 2009-2010 through January 31, 2016



	July	August	September	October	November	December	January	February	March	April	May	June	Year's Average
2009 to 2010	21%	26%	33%	41%	37%	37%	29%	37%	33%	28%	31%	27%	32%
2010 to 2011	30%	24%	33%	26%	31%	27%	32%	36%	27%	33%	31%	36%	30%
2011 to 2012	33%	39%	36%	31%	37%	28%	25%	30%	27%	31%	24%	25%	31%
2012 to 2013	33%	22%	33%	41%	41%	31%	40%	33%	35%	43%	39%	32%	35%
2013 to 2014	35%	37%	41%	39%	35%	36%	41%	42%	34%	35%	40%	41%	38%
2014 to 2015	45%	33%	29%	40%	37%	37%	31%	42%	34%	43%	34%	31%	36%
2015 to 2016	36%	30%	34%	32%	38%	35%	39%	0%	0%	0%	0%	0%	35%

# YCAS Cat Return to Owner Rates (Including Non-Stray Intake)

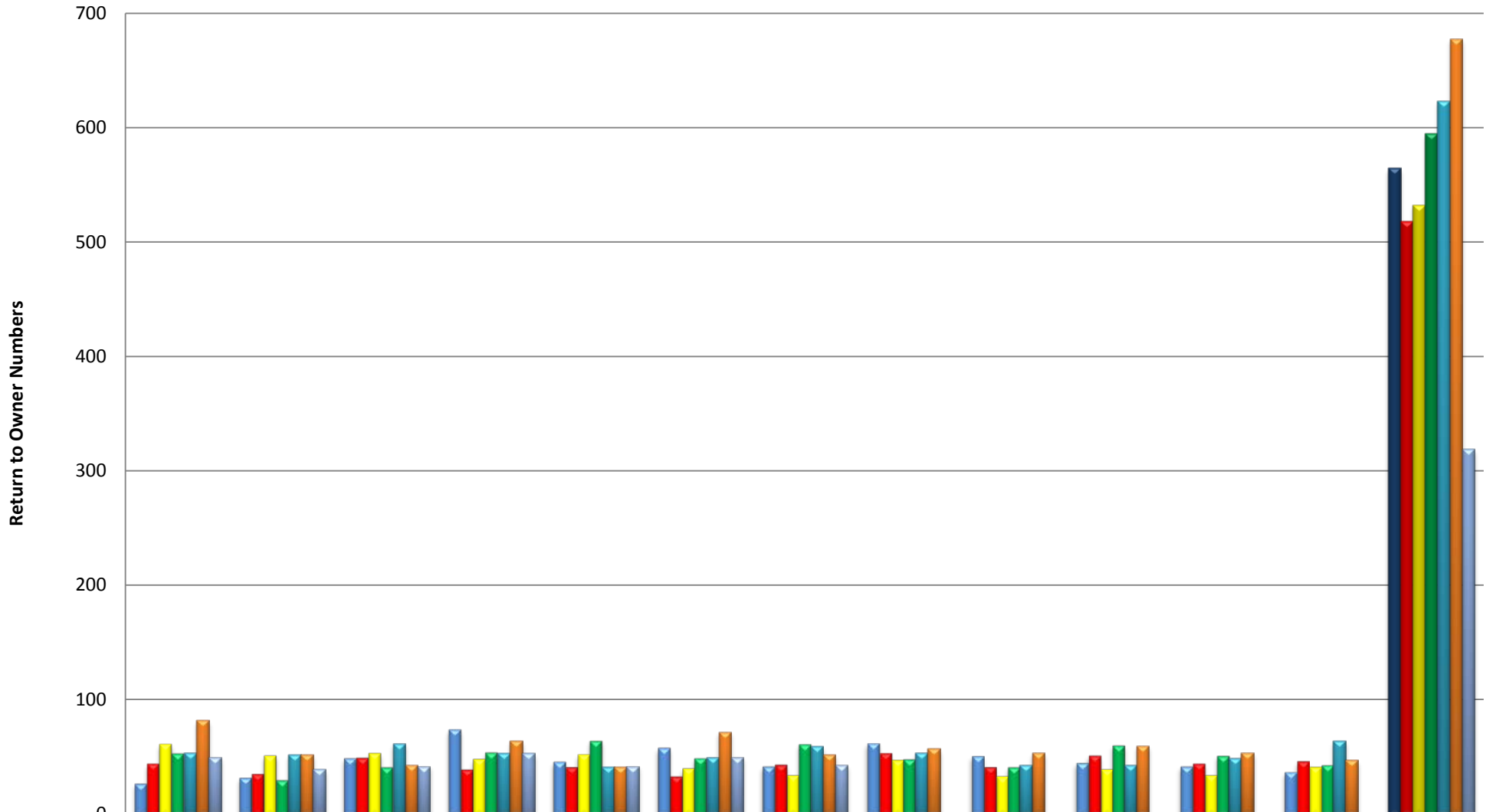
## Fiscal Years 2009-2010 through January 31, 2016



	July	August	September	October	November	December	January	February	March	April	May	June	Year's Average
2009 to 2010	3%	3%	4%	1%	2%	7%	5%	4%	7%	2%	3%	3%	4%
2010 to 2011	1%	2%	3%	6%	5%	4%	5%	2%	5%	5%	1%	2%	3%
2011 to 2012	5%	3%	1%	4%	2%	4%	6%	2%	8%	5%	6%	2%	4%
2012 to 2013	3%	3%	3%	4%	6%	10%	9%	4%	2%	3%	3%	3%	5%
2013 to 2014	3%	1%	4%	2%	9%	2%	6%	4%	5%	3%	5%	4%	4%
2014 to 2015	2%	2%	1%	3%	2%	8%	5%	0%	10%	3%	4%	2%	3%
2015 to 2016	5%	3%	6%	3%	2%	3%	3%	0%	0%	0%	0%	0%	4%

# YCAS Dog Return to Owner Numbers (Including Non-Stray Intake)

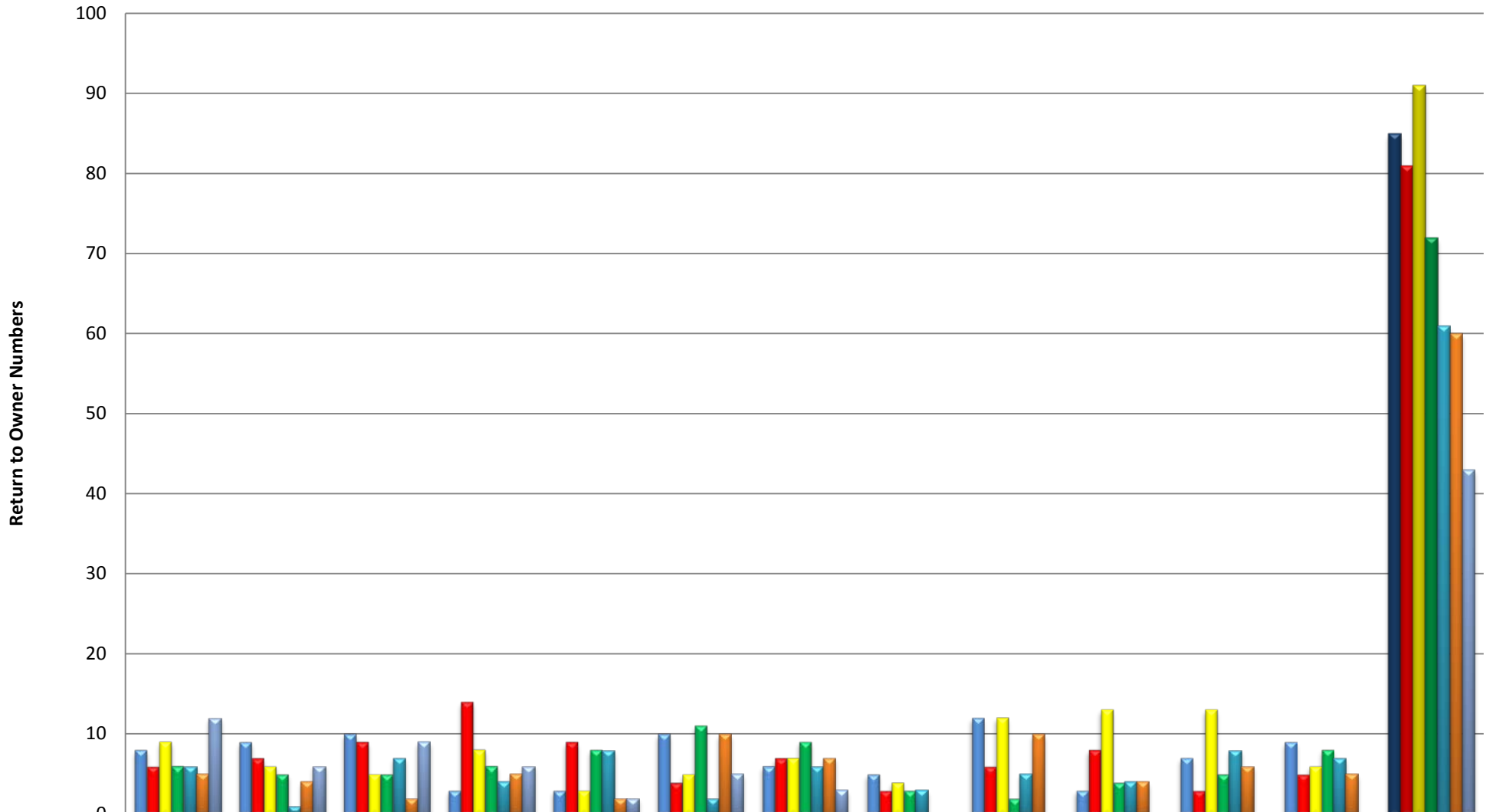
## Fiscal Years 2009-2010 through January 31, 2016



	July	August	September	October	November	December	January	February	March	April	May	June	Period Total
2009 to 2010	27	32	49	74	46	58	42	62	51	45	42	37	565
2010 to 2011	44	35	49	39	41	33	43	53	41	51	44	46	519
2011 to 2012	61	51	53	48	52	40	34	47	33	39	34	41	533
2012 to 2013	53	30	41	54	64	49	61	48	41	60	51	43	595
2013 to 2014	54	52	62	53	41	50	59	54	43	43	49	64	624
2014 to 2015	82	52	43	64	41	72	52	57	54	60	54	47	678
2015 to 2016	50	39	42	53	42	50	43	0	0	0	0	0	319

# YCAS Cat Return to Owner Numbers (Including Non-Stray Intake)

## Fiscal Years 2009-2010 through January 31, 2016



	July	August	September	October	November	December	January	February	March	April	May	June	Period Total
2009 to 2010	8	9	10	3	3	10	6	5	12	3	7	9	85
2010 to 2011	6	7	9	14	9	4	7	3	6	8	3	5	81
2011 to 2012	9	6	5	8	3	5	7	4	12	13	13	6	91
2012 to 2013	6	5	5	6	8	11	9	3	2	4	5	8	72
2013 to 2014	6	1	7	4	8	2	6	3	5	4	8	7	61
2014 to 2015	5	4	2	5	2	10	7	0	10	4	6	5	60
2015 to 2016	12	6	9	6	2	5	3	0	0	0	0	0	43